

One **STOP.** ABRASIVE *Resource*

Smart Products for a Healthy Smile®



OneGloss®



Dura-Green® DIA



Super-Snap® X-Treme



BurButler™ Abrasive Kits



Finishing & Polishing

VISIT www.shofu.com | CALL 800.827.4638

STONES & POLISHERS



Dura-Green®

Made of high quality silicon carbide grit, **Dura-Green** stones are exceptional for fast contouring and finishing of porcelain, composites, precious alloys and amalgam.

Dura-Green® DIA

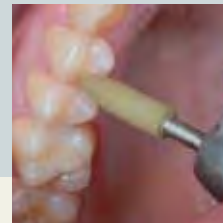
Vitrified-bonded diamond abrasive, the diamond version of a carborundum point, is designed for contouring porcelains and ceramic copings with superior results.

Dura-Green DIA provides enhanced performance with a smoother, chipless cut versus silicon carbide or diamond burs. Densely packed diamonds are embedded throughout (from the surface to the core) in a special glass binder offering extended cutting ability.

Dura-White®

For fine finishing of enamel, glass ionomer cements, composites, porcelain and prepared tooth abutment, nothing exceeds the performance of **Dura-White** stones.

Made of micrograined aluminium oxide grits, each stone is perfectly balanced to provide vibration-free performance.



CompoMaster®

CompoMaster polishers are filled with a high density of pure diamond particles. Both are durable and quick, they are designed to finish, polish, superpolish and provide a smooth surface and most lustrous shine on any composite restoration.

- *Carefully balanced blend of diamond particles*
- *Produces the smoothest finish and luster*
- *A simple two-step system*

Brownie®, Greenie® & Supergreenie

These popular silicone polishers are impregnated with high-quality polishing ingredients for fast brilliant polishing on precious metals and amalgam. Use **Brownies** to achieve a smooth surface, **Greenies** for a lustrous polish and **Supergreenies** for a super-polish.



Super-Snap™ X-Treme

Super-Snap X-Treme is the latest generation of Super-Snap polishing disks. Super-Snap X-Treme aluminum oxide disks offer greater tactile feel, flexibility and durability. A new 3D semispherical surface coating provides X-Treme gloss results.

- *An enhancement to the original green and red Super-Snap disks*
- *Added thickness to increase durability, pressure and tactile feel while maintaining flexibility interproximally without warping*
- *3D coating on red superfine disk – semispherical shaped grits – reduces clogging, secondary scratches and achieves extreme gloss results*
- *2 sizes, double sided disposable aluminum oxide disks – standard 12mm and mini 8mm*
- *For a complete 4-step system – use with Super-Snap coarse (black) and medium (violet) refill disks*

OneGloss®

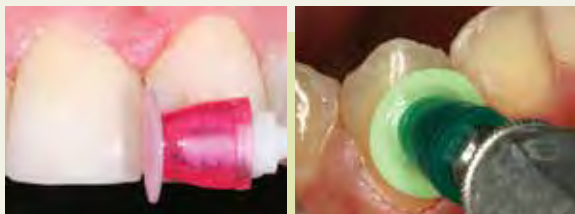
OneGloss is an aluminum oxide one-step finisher and polisher that provides the ideal finish for all types of composite and cemented restorations simply by altering the contact pressure as you go from finishing to polishing. Available in three different shapes and durable enough to withstand polishing an entire arch.

OneGloss

- *Durable and disposable*
- *Complete kit with stainless steel CA mandrels*

OneGloss PS

- *Durable, disposable and individually wrapped*
- *Mounted on sturdy plastic mandrels*



Lab Series Stones

Lab Series stones are made of pure aluminium oxide and are free from carbon contaminants, ideal for shaping and finishing crown and bridge work.

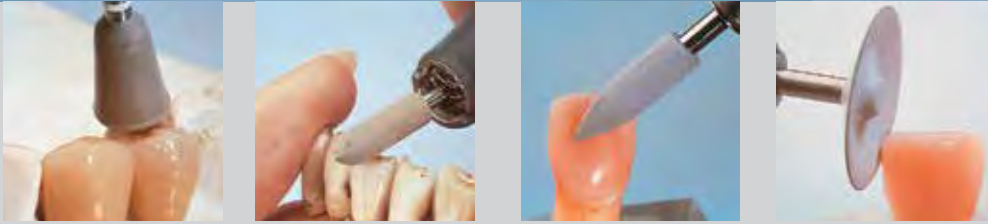


CeraMaster®

A unique blend of silicones and the distribution of diamond particles of the **CeraMaster** polishers make these instruments the best choice for porcelain polishing. They are ideal for use in the dental practice and dental laboratory.

Using **CeraMaster Coarse** and **CeraMaster** together saves time by providing a simple, two-step system. Use CeraMaster Coarse to finish and polish, followed by the CeraMaster to superpolish porcelain restorations.





CeraMisté®

Made especially for polishing porcelain and enamel, **CeraMisté** polishers provide the best in silicone technology.

- *Silicone carbide impregnated polishers*
- *Three-step system*

CompoSite

These polishers are perfect for finishing micro and hybrid composites without scratching the surrounding enamel.

- *Remove orthodontic adhesives*
- *Two-step system to pre-polish and polish*



Hardie Polishers

These silicone polishers contain high-quality abrasive materials for polishing hard palladium, nickel-chrome, and cobalt-chrome alloys.



AcryPoint

Silicon carbide polishers designed for adjusting and polishing all acrylic appliances to a high luster, either in the laboratory or at chairside, without the need for messy topical polishing compounds.



Dura-Polish

Dura-Polish

- *Pre-polishing dental materials*
- *Impregnated 73 wt% aluminum oxide particles*

Dura-Polish DIA

- *Achieve a high gloss finish on all hard dental materials*
- *Impregnated 67 wt% diamond particles*



DirectDIA

A smooth lime flavored intraoral diamond polishing paste with 20 wt% super fine diamond particles.

- *Optimum viscosity and excellent handling*

Unmounted Wheels

Dura-Green Wheels and **Chipless Wheels**, made of silicon carbide grit, are designed for fast contouring and finishing of porcelain and precious alloys. Resin bonded **Cut-Off Disks** and silicon carbide **SpruCut Wheels** are designed for cutting-off sprues of cast alloys and contouring metal crowns.



DIAMONDS



- Multilayer manufacturing technique with special surface treatment for durability
- Exact, uniform distribution of diamond particles
- Durability
- Precise operation
- Vibration-free action

Official Partner



Note the difference in size between regular shank and minimally invasive shank.



Minimally Invasive

The evolution of adhesive dentistry and restorative materials continue to expand the treatment options available to today's dental professionals. Consequently, tooth preservation is becoming increasingly important as patients are educated on the advantages afforded by maintenance of their natural tooth structures.

TPE Diamond

These tissue-protective, end-cutting diamond points are recommended for time saving preparation of subgingival porcelain shoulder margins.

A significant feature is the beveled cutting surface, fashioned to eliminate damaging adjacent tissue or under cutting the axial wall during a shoulder preparation.



Hybrid Point®

The remarkable feature of **Hybrid Points** is the constant, long-lasting cutting performance. A new method that exactly calculates the distance between the grit means that only a light pressure is required for outstanding results with no heat build-up. These shapes are recommended not only for cavity, but crown and bridge preparation as well.

T&F Hybrid Point®

Fine adjusting and the best preparation for polishing in aesthetic dentistry is what lies behind the development of **T&F Hybrid Points**. The ultra-fine diamond grit allows the finishing of enamel, porcelain, and composite with optimum results.

GingiCurettage® Diamond

These gold color-coded **FG Diamonds** are designed to establish a chamfered finish to the tooth surface in crown and bridge preparations, giving an ideal profile for exact impression taking.

Robot® Diamond

The **Robot Diamond**, with clear benefits for restorative and aesthetic procedures, perfectly illustrates the commitment of Shofu to successful dental treatment and patient satisfaction. The multi-coating technique used to create the most durable surface for the **Robot Diamonds** results in an efficient bur with less clogging. This satisfies the precision requirements for today's CAD/CAM technology products. Indicated for all cavity and crown preparation, the **Robot Diamond** rotary instruments are made in a computer-automated environment that guarantees an even distribution of diamond particles onto a one-piece stainless steel shank.



One **STOP.**

ABRASIVE *Resource*

Smart Products for a Healthy Smile®

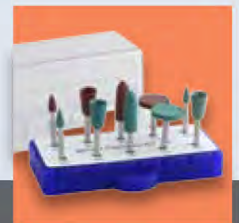


VISIT www.shofu.com | CALL 800.827.4638

BurButler™ Abrasive Kits

A collection of new and improved abrasive kits comprises of **Composite Finishing Kit** (CA, FG) indicated for contouring and finishing of direct resin composites; **Metals Polishing Kit** (CA) is an ideal assortment of abrasives impregnated with polishing compounds to quickly provide outstanding results on amalgam, gold, precious and non-precious alloy restorations; **CompoSite Polishing Kit** (CA) featuring a comprehensive bur assortment for finishing and polishing of direct resin composites; **Ceramisté Polishing Kit** (CA, FG), an all-inclusive kit with burs impregnated with silicon carbide, designed to swiftly polish porcelain and enamel.

All kits incorporate our new fully autoclavable 10-hole **BurButler**, the universal bur block that grips all burs, and a water-resistant label with part numbers for easy reordering.



USA

Shofu Dental Corporation
1225 Stone Drive
San Marcos, CA 92078-4059,
USA

JAPAN

SHOFU Inc.
11 Kamitakamatsu-cho
Fukuine, Higashiyama-ku
Kyoto 605-0983, Japan

SINGAPORE

Shofu In. Singapore Branch
10 Science Park Road #03-12
The Alpha, Science Park II
Singapore 117684

U.K.

SHOFU UK Riverside House,
River Lawn Road, Tonbridge,
Kent, TN9 1EP, UK

CHINA

Shofu Dental Trading
(Shanghai) Co. Ltd.
No.645 Jiye Road
Seshan Industry Park
Songjiang 201602, Shanghai,
China

GERMANY

EU Representative:
Shofu Dental GmbH
Am Brüll 17
40878 Ratingen, Germany

SN181-0917