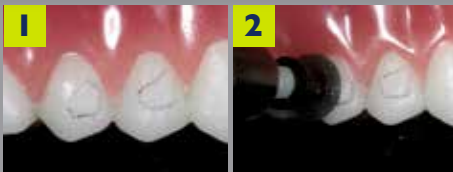


new!

ATTACHMENT REMOVAL KIT FOR CLEAR ALIGNERS

Safe Removal of Orthodontic Composite Attachments

SHOFU



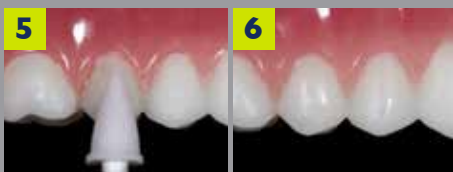
One:
Define the outline of the attachments with a sharp pencil.

Two:
Remove a bulk of the attachment with Super-Snap®
Black-Course or Robot® Carbide CTF Finisher.



Three:
Margins are still visible. Do not touch the pencil line.

Four:
You should see a uniform material/tooth interface.



Five:
Remove remaining material and continue to polish
enamel with OneGloss® PS.

Six:
Final polish results, the margins are not visible.

Photos courtesy of Shannon Brinker, CDA, CDD

TECHNIQUE

The Attachment Removal Kit for Clear Aligners is designed to offer proper tools and provide choices for safe and effective removal of orthodontic attachments created with direct composite. This kit will help dental professionals safely detach the composite resin and restore the tooth to a highly aesthetic look, without marring the surface.

- A complete system for safe and easy removal of orthodontic attachments
- Inclusive of Shofu's award-winning finishers and polishers
- Selected instruments and the removal technique support minimally invasive dentistry

Visit www.shofu.com or call **800.827.4638**

Order Information • ARK

Kit Contents:

- 0503 - (40) Super-Snap® Singles Mini Size Disks (8mm)
- 0770-3 - (3) Robot® Carbide Finishers CTF
- 0176 - (10) OneGloss® PS, Cup
- 0177 - (10) OneGloss® PS, Midi-Pt.
- 0178 - (10) OneGloss® PS, IC
- 0536 - (50) Super-Snap® SuperBuff Disks
- 0558 - DirectDia Polishing Paste
- 0797 - Bur Block Station II

BONUS Items

- 1753 - (2) Beautifil® II A2 tips (0.25g)
- 2202 - (2) Beautifil Flow Plus® F00 A2 tips (0.21g)
- 2220 - (2) Beautifil Flow Plus® F03 A2 (0.21g)



Shofu Dental Corporation
1225 Stone Drive
San Marcos, CA
92078-4059, USA