

# BeutiBond Xtreme

Single-Component, Universal Bond with Quad-Adhesive Technology



BeutiBond Xtreme  
Single-Component,  
Universal Bond with  
Quad-Adhesive Technology

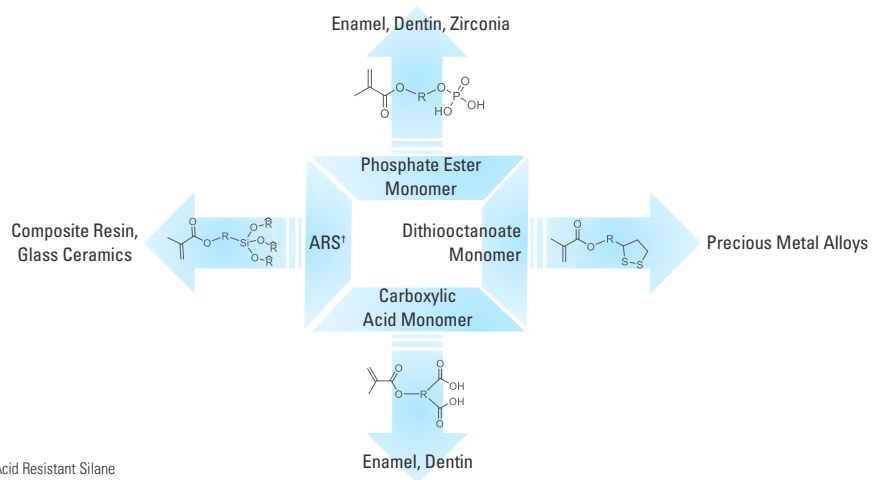
SERVE  
PATIENTS  
INCREASE  
PRODUCTION  
GO HOME  
ON TIME!

Shofu is dedicated to manufacturing the highest quality products utilizing our innovative technologies to enhance minimally invasive cosmetic dentistry.

shofu.com  
800.827.4638  
customer-service@shofu.com

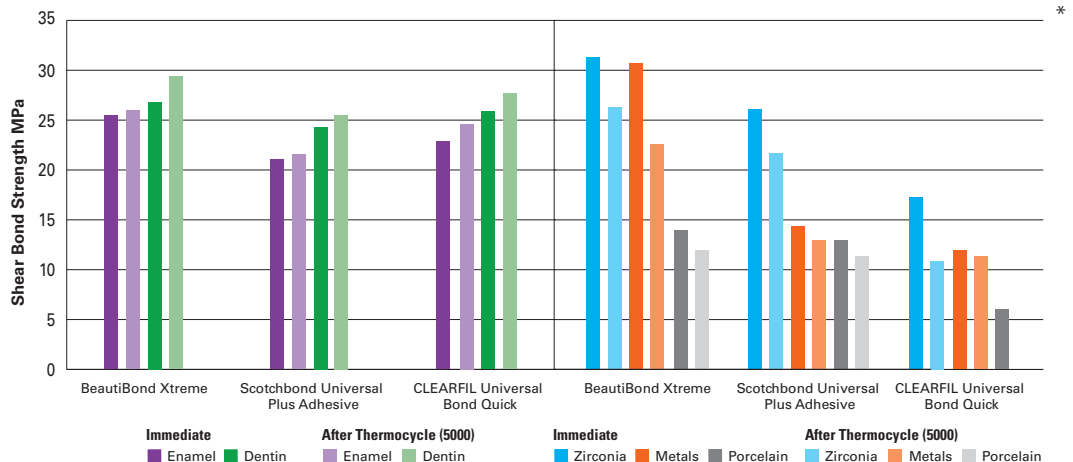
## STRONG DURABLE BOND

Due to **BeutiBond Xtreme's** unique Quad-Adhesive Technology, a single layer gives a strong, fast, and reliable bond. Ideal for direct and indirect restorations using any light-cure, dual-cure or self-cure material without the need for additional primers. **BeutiBond Xtreme** is the truly universal adhesive that offers flexibility with self-etch, selective-etch, or total-etch—the choice is yours!

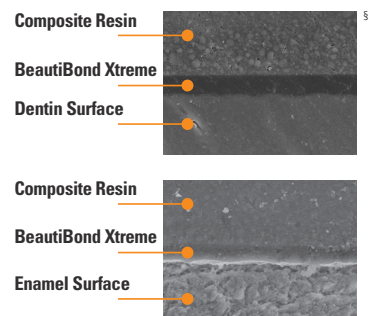


\*ARS, Acid Resistant Silane

### Self-Etch Mode



**BeutiBond Xtreme** is HEMA-free, eliminating the risk of sensitivity and bond hydrolysis. This also improves the stability of the adhesive layer, resulting in a uniformly thin bond layer. Even after thermocycling, no gaps were found between the enamel and dentin adhesive interfaces, ensuring a strong bond.



<sup>5</sup>University of Paris, France

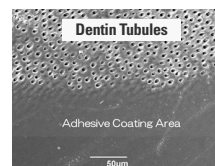


shofu.com  
800.827.4638  
customer-service@shofu.com

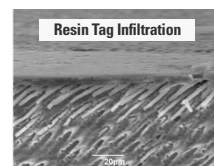


## PREVENTS SENSITIVITY

**BeautiBond Xtreme** provides an optimal seal to moist or dry dentin, penetrating deep into the dentinal tubules to create resin tags for secure adhesion, eliminating the risk of postoperative sensitivity and microleakage.



**BeautiBond Xtreme** coated dentin surface with a single layer application.



Cross sectional SEM image of sealed layer.

## AESTHETIC

With extremely low film thickness (5µm), **BeautiBond Xtreme** eliminates marginal stain lines caused by brands with thicker bonding layers. **BeautiBond Xtreme** is the best choice when restorations must be picture-perfect.

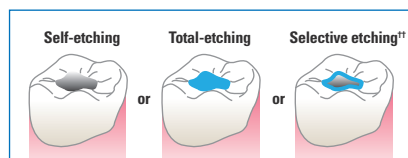


Dr. Kanamura

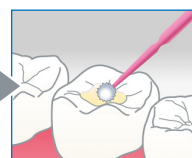
## FAST AND EASY TO USE

**BeautiBond Xtreme's** ease of use and simplified one-step application makes the bonding process consistently reliable and clinically efficient.

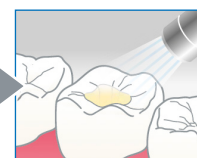
### DIRECT RESTORATIONS



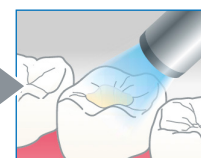
Preparation of the tooth surface  
\*Follow the standard method for acid etch. Then rinse and dry.



Apply a single layer—  
No waiting time.  
When etching with phosphoric acid, rub for 20 seconds.

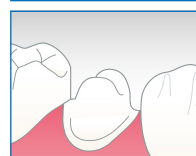


Gently air dry for 3 seconds then blow with greater force until evaporated.

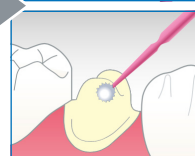
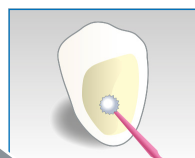


LED Light: 5 seconds  
Halogen Light: 10 seconds

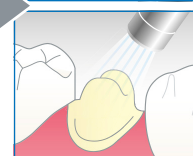
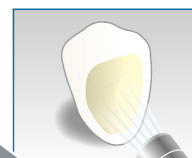
### INDIRECT RESTORATIONS



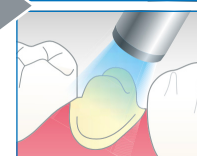
● Roughen the intaglio restoration surface.  
Rinse and dry.



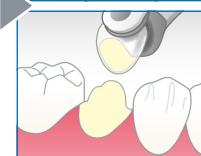
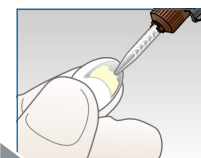
Apply a single layer—  
No waiting time.



Gently air dry for 3 seconds then blow with greater force until evaporated.



Light-cure.  
LED Light: 5 seconds  
Halogen Light: 10 seconds



Apply resin cement, seat and cure as per manufacturer's instruction.

# BeautiBond<sup>®</sup> Xtreme



- ☐ **BeautiBond Xtreme Unit Dose Set**  
(Item No. Y2702)
  - (50) 0.1mL unit doses
  - 50 microbrushes

- ☐ **BeautiBond Xtreme Bottle**  
(Item No. Y2449)
  - 5mL

