

# Beautiful-Bulk Flowable

## Bulk Fill Flowable Composite with Bioactive GIOMER Technology



### Beautiful-Bulk Flowable

Bulk Fill Flowable Composite with Bioactive GIOMER Technology

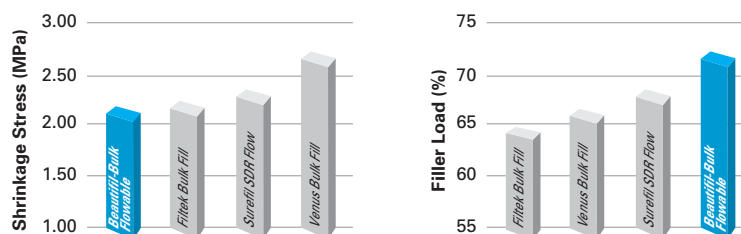
*Shofu is dedicated to manufacturing the highest quality products utilizing our innovative technologies to enhance minimally invasive cosmetic dentistry.*

shofu.com  
800.827.4638  
customer-service@shofu.com



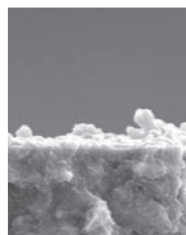
### FUNCTIONAL

**Beautiful-Bulk Flowable** is the ideal light-cure dentin replacement material for deep restorations. For years glass ionomer was used for dentin replacement, but long curing times caused significantly reduced productivity, making this impractical until resin-based alternatives emerged. With physical properties similar to dentin, 4mm depth of cure, and the lowest shrinkage stress in this category, **Beautiful-Bulk Flowable** is the perfect choice for sensitivity-free dentin replacement and maximum clinical efficiency.

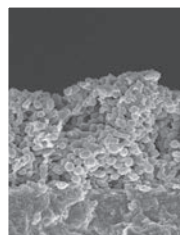


### BIOACTIVE GIOMER TECHNOLOGY INSIDE

Shofu's proprietary Giomer Technology gives **Beautiful-Bulk Flowable** anti-bacterial and acid neutralizing effects to minimize problems caused by bacterial proliferation such as secondary decay and restorative failure. A Univ. of Florida Dental School clinical study showed no secondary decay or failures after 8 years! **Beautiful-Bulk Flowable** is the only bulk flow product to combine bioactive benefits with speed and clinical efficiency.

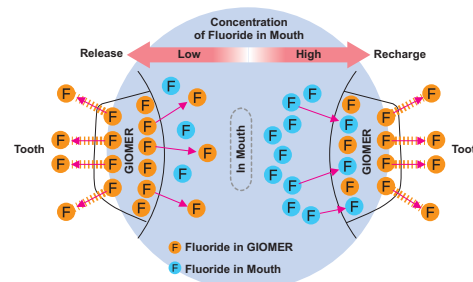


Minimal Bacteria (Asahi University)



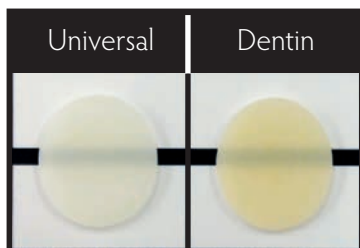
Advanced Bacterial Colonization

#### Fluoride Release & Recharge from GIOMER



\*1. Gordan V.V., et al. A clinical evaluation of a self-etching primer and a Giomer restorative material: Results at 8 years. JAM Dent. Assoc. 2007;138:621-627

## Beautiful-Bulk Flowable



#### Beautiful-Bulk Flowable

2.4 g syringe

Shade  
Universal  
Dentin

Part Number  
☐ 2030  
☐ 2031

0.23 g x 20 tips

Shade  
Universal  
Dentin

Part Number  
☐ 2028  
☐ 2029