

# Beautiful Flow Plus®

Nano-Hybrid, Flowable Composite with Giomer Technology



## Beautiful Flow Plus

Nano-Hybrid,  
Flowable Composite with  
Giomer Technology

SERVE  
PATIENTS  
INCREASE  
PRODUCTION

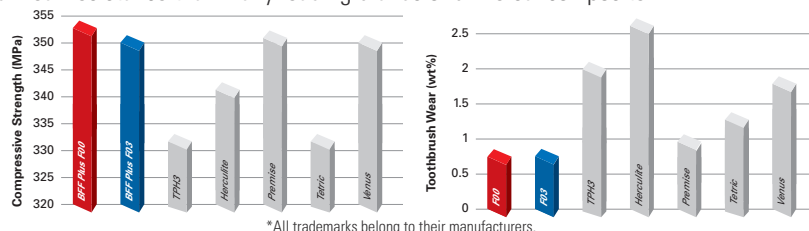
GO HOME  
ON TIME!

*Shofu is dedicated to manufacturing the highest quality products utilizing our innovative technologies to enhance minimally invasive cosmetic dentistry.*

shofu.com  
800.827.4638  
customer-service@shofu.com

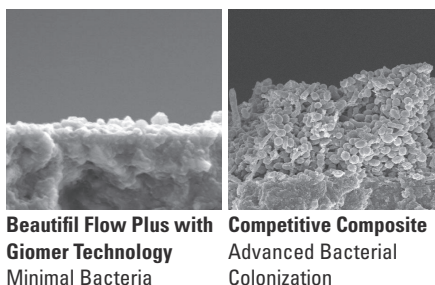
## REVOLUTIONARY STRENGTH

**Beautiful Flow Plus** was the first flowable composite ever awarded FDA approval for all restorative classes—including occlusal and cusp. Strong and durable, **Beautiful Flow Plus** has better compressive strength and wear resistance than many leading brands of universal composite.

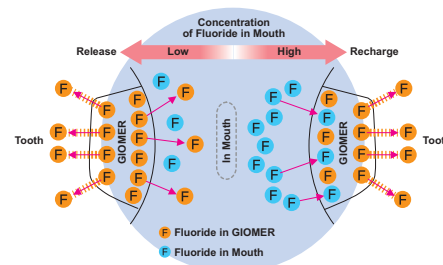


## ELIMINATES SECONDARY DECAY (GIOMER)

Shofu's exclusive Giomer technology gives **Beautiful Flow Plus** the ability to release and recharge fluoride and other beneficial ions for the life of the restoration. As a result of these bioactive properties, your patients receive healthful benefits unavailable in any competitor—anti-bacterial effect, acid neutralization, strengthen tooth structure and more! These benefits were validated by a clinical study at the University of Florida Dental School where no failures or decay were found in any of the restorations—even after eight years!\*



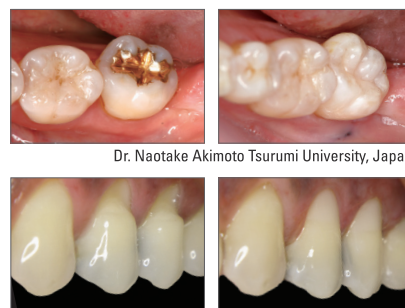
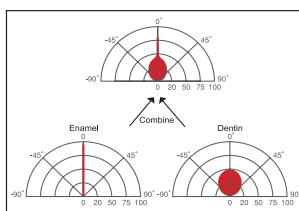
### Fluoride Release & Recharge from GIOMER



\*1. Gordan V.V., et al. A clinical evaluation of a self-etching primer and a Giomer restorative material: Results at 8 years. JAM Dent. Assoc. 2007;138:621-627

## AESTHETICS

As a nano-hybrid, **Beautiful Flow Plus** offers superior strength and polishability. **Beautiful Flow Plus'** unique filler structure combines the light transmission and diffusion properties of both dentin and enamel to blend well with surrounding dentition for picture perfect restorations.



# SHOFU

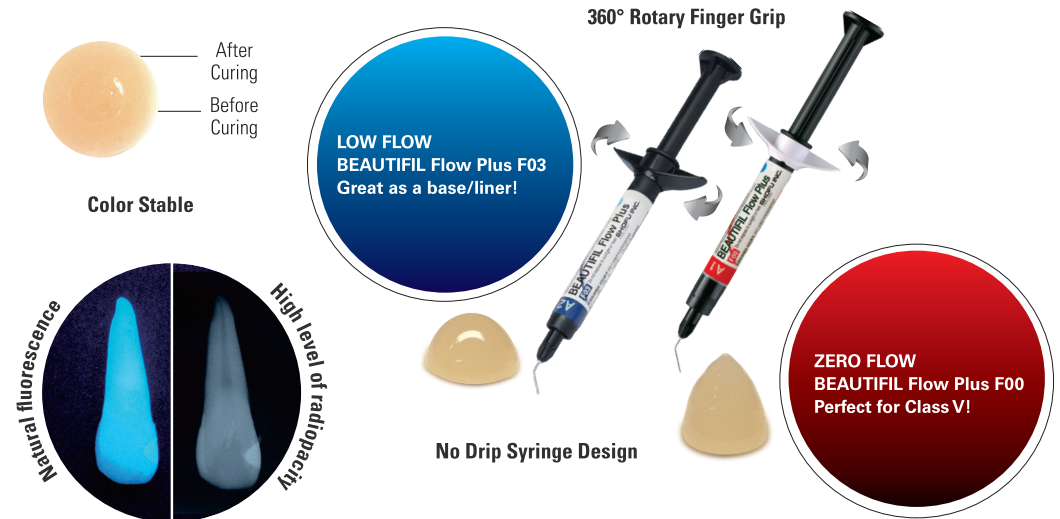
## FUNCTIONAL

Available in two viscosities (Zero Flow & Low Flow), **Beautiful Flow Plus** offers dentists treatment options to minimize chair time and patient discomfort. Both viscosities have excellent radiopacity, natural fluorescence and high flexural strength. All of this, combined with precise handling and the predictability of absolute shade stability makes **Beautiful Flow Plus** the perfect restorative material.

shofu.com  
800.827.4638  
customer-service@shofu.com

**GIOMER**  
BIOACTIVE.  
THE BETTER CHOICE.

RESTORATIVES



## CONFIDENCE

For over 100 years, Shofu Dental's dedication to quality has made us one of the world's most respected dental products manufacturers. What can we do for you?

## BEAUTIFIL Flow Plus



### BEAUTIFIL Flow Plus Kits

#### Standard Kit

(Item No. 2000S)

- One 2.2g syringe each of F00 (A2 and A3)
- One 2.2g syringe each of F03 (A2 and A3)
- Additional Shofu samples

#### Pedo Kit

(Item No. 2000P)

- One 2.2g syringe each of F00 (A1 and BW)
- One 2.2g syringe each of F03 (A1 and BW)
- Additional Shofu samples

### BEAUTIFIL Flow Plus F03

(Low Flow) 2.2g syringe/0.21g x 20 tips

Shade	Syringe	Tips No.
A0.5	<input type="checkbox"/> 2013	<input type="checkbox"/> 2218
A1	<input type="checkbox"/> 2014	<input type="checkbox"/> 2219
A2	<input type="checkbox"/> 2015	<input type="checkbox"/> 2220
A3	<input type="checkbox"/> 2016	<input type="checkbox"/> 2221
A3.5	<input type="checkbox"/> 2017	<input type="checkbox"/> 2222
A4	<input type="checkbox"/> 2018	<input type="checkbox"/> 2223
A20	<input type="checkbox"/> 2020	<input type="checkbox"/> 2229
A30	<input type="checkbox"/> 2021	<input type="checkbox"/> 2230
B1	<input type="checkbox"/> 2066	<input type="checkbox"/> 2224
B2	<input type="checkbox"/> 2067	<input type="checkbox"/> 2225
C2	<input type="checkbox"/> 2068	<input type="checkbox"/> 2226
D2	<input type="checkbox"/> 2069	<input type="checkbox"/> 2227
Incisal	<input type="checkbox"/> 2023	
Bleach White	<input type="checkbox"/> 2024	<input type="checkbox"/> 2233
Milky White	<input type="checkbox"/> 2026	<input type="checkbox"/> 2235
Cervical	<input type="checkbox"/> 2027	

### BEAUTIFIL Flow Plus F00

(Zero Flow) 2.2g syringe/0.21g x 20 tips

Shade	Syringe	Tips No.
A0.5	<input type="checkbox"/> 2000	<input type="checkbox"/> 2200
A1	<input type="checkbox"/> 2001	<input type="checkbox"/> 2201
A2	<input type="checkbox"/> 2002	<input type="checkbox"/> 2202
A3	<input type="checkbox"/> 2003	<input type="checkbox"/> 2203
A3.5	<input type="checkbox"/> 2004	<input type="checkbox"/> 2204
A4	<input type="checkbox"/> 2005	<input type="checkbox"/> 2205
A0.5O	<input type="checkbox"/> 2006	<input type="checkbox"/> 2211
A1O	<input type="checkbox"/> 2007	<input type="checkbox"/> 2212
A2O	<input type="checkbox"/> 2008	<input type="checkbox"/> 2213
B1	<input type="checkbox"/> 2062	<input type="checkbox"/> 2206
B2	<input type="checkbox"/> 2063	<input type="checkbox"/> 2207
C2	<input type="checkbox"/> 2064	<input type="checkbox"/> 2208
D2	<input type="checkbox"/> 2065	
Incisal	<input type="checkbox"/> 2010	<input type="checkbox"/> 2215
Bleach White	<input type="checkbox"/> 2011	<input type="checkbox"/> 2216



Scan Here  
Instructions  
for Use