

Beautiful II Enamel

Nano-Hybrid, Enamel Composite with GIOMER Technology

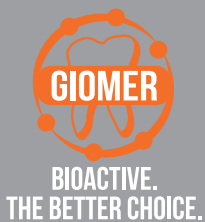


Beautiful II Enamel

Nano-Hybrid, Enamel Composite with GIOMER Technology

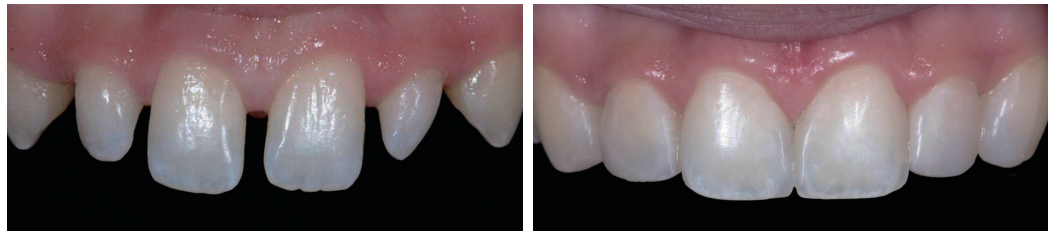
Shofu is dedicated to manufacturing the highest quality products utilizing our innovative technologies to enhance minimally invasive cosmetic dentistry.

shofu.com
800.827.4638
customer-service@shofu.com



AESTHETIC

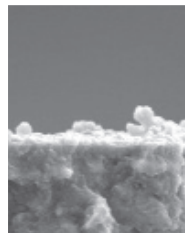
Beautiful II Enamel is a nano-hybrid universal composite that comes in four unique shades; allowing you to aesthetically restore cases involving incisal edges, naturally translucent dentition, enamel loss, composite veneering, and other complex cosmetic cases.



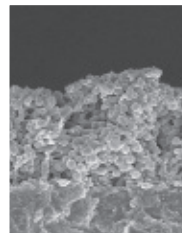
Frank J. Milnar, DDS, AAACD

GREATLY REDUCES SECONDARY DECAY (GIOMER)

Shofu's GIOMER chemistry gives **Beautiful II Enamel** long-term ion exchange for anti-bacterial and acid neutralizing effects which may help minimize problems caused by plaque and biofilm. A University of Florida Dental School clinical study showed no secondary caries after 8 years!*

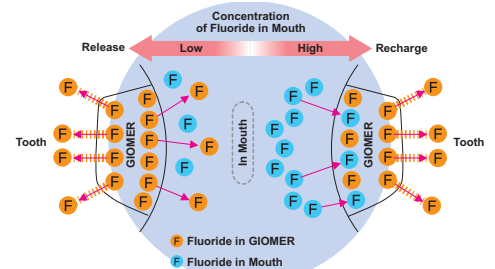


Beautiful II Enamel with Giomer
Minimal Bacteria



Competitive Composite
Advanced Bacterial Colonization

Fluoride Release & Recharge from GIOMER



*1. Gordan V.V., et al. A clinical evaluation of a self-etching primer and a Giomer restorative material: Results at 8 years. JAM Dent. Assoc. 2007;138:621-627

BEAUTIFIL II Enamel



	High-V blue T translucent (HVT)	Translucent (T)	Low-V blue T translucent (LVT)	Amber (AM)
2.5g				
PN	Y2251	Y2250	Y2252	Y2253



BEAUTIFIL II Enamel

2.5g syringe

Shade

- HV Translucent
- Translucent
- LV Translucent
- Amber

Syringe

- Y2251
- Y2250
- Y2252
- Y2253



Beautifil II PINK & WHITE Kit (Item No. GMK3)

- 5 (2.5g) Beautifil II Gingiva syringe
- 1 (2g) Beautifil Flow Gingiva F02 syringe
- 4 (2.5g) Beautifil II Enamel syringes