

Beautiful II LS

Premium Nano-Hybrid, Universal Composite with GIOMER Technology



Beautiful II LS

Premium Nano-Hybrid,
Universal Composite with
GIOMER Technology

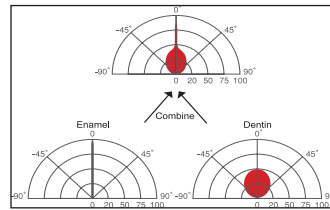
SERVE
PATIENTS
INCREASE
PRODUCTION
GO HOME
ON TIME!

*Shofu is dedicated to
manufacturing the highest
quality products utilizing our
innovative technologies to
enhance minimally invasive
cosmetic dentistry.*

shofu.com
800.827.4638
customer-service@shofu.com

LUSTROUS SHINE

Due to a unique resin technology, **Beautiful II LS** can quickly and easily be polished to a long lasting, high-gloss finish. As with all Shofu composites, **Beautiful II LS's** filler structure combines the light transmission and diffusion properties of both dentin and enamel to blend well with surrounding dentition for picture perfect restorations.



Light transmission and diffusion
properties of Beautiful II

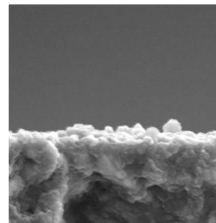


Photos courtesy of Frank J. Milnar, DDS, AAACD

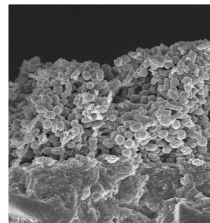
Photos courtesy of Thomas Dudney, DMD

FLUORIDE RELEASE AND RECHARGE (GIOMER)

Shofu's exclusive GIOMER technology gives **Beautiful II LS** the ability to release and recharge fluoride and other beneficial ions for the life of the restoration. As a result of these bioactive properties, your patients receive healthful benefits unavailable in any competitor—anti-bacterial effect, acid neutralization, strengthen tooth structure and more! These benefits were validated by a clinical study at the University of Florida Dental School where no failures or decay were found in any of the restorations—even after eight years!*

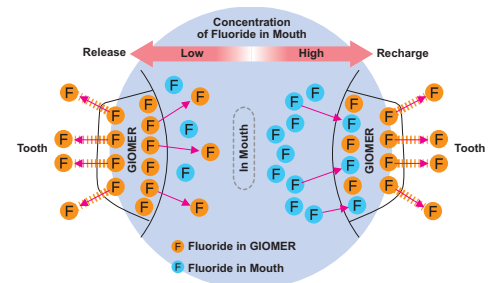


Beautiful II with GIOMER
Minimal Bacteria



Competitive Composite
Advanced Bacterial
Colonization

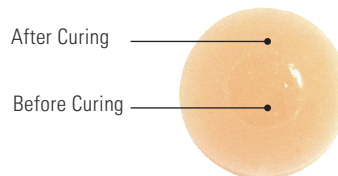
Fluoride Release & Recharge from GIOMER



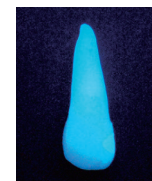
*1. Gordan V.V., et al. A clinical evaluation of a self-etching primer and a Giomer restorative material: Results at 8 years. JAM Dent. Assoc. 2007;138:621-627

LASTING STRENGTH

The physical properties of **Beautiful II LS** are among the best available. Nano-hybrid aesthetics make it ideal for anterior restorations while high filler load (82.9%) and wear resistance (1.41%) makes it strong enough for posterior restorations. All of this combined with non-sticky handling and the predictability of absolute shade stability makes **Beautiful II LS** the perfect premium restorative material.



Color Stable



Natural Fluorescence

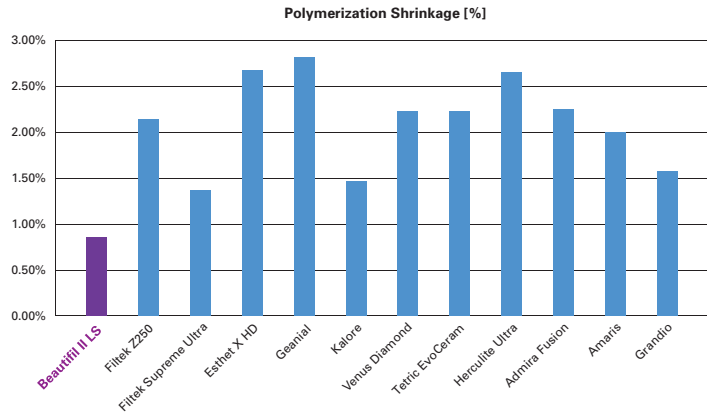


shofu.com
800.827.4638
customer-service@shofu.com



LOW SHRINK

Shofu's new resin technology allows **Beautiful II LS** to have among the lowest polymerization shrinkage (and resulting shrinkage stress) of universal composites currently on the market. Reduced shrinkage can greatly minimize the incidence of open margins and secondary decay which can result from composite shrinkage.



PROVEN QUALITY



Beautiful II LS is the latest product in Shofu's highly rated Beautiful line. Like all of the other Beautiful products, this premium universal composite offers a combination of healthful benefits: GIOMER Technology, aesthetics, non-sticky handling, and superior physical properties to improve clinical outcomes.

CONFIDENCE

For almost 100 years, Shofu Dental's dedication to quality has made us one of the world's most respected dental products manufacturers. What can we do for you?

Beautiful II LS



- ☐ **Beautiful II LS Bulk Tip Kit**
(Item No. BIILSK2)
• (80) 0.25g tips in A2
Bonus Items:
• (10) Beautiful II LS A2 tips
• 25-Hole BurButler with tall lid

BEAUTIFIL II LS

4.5g syringe

Shade

- A1
A2
A3
A3.5
A4
A20
A30
B1
B2
B3
C2
C3
Incisal
Bleach White

Syringe

- ☐ Y2270
☐ Y2271
☐ Y2272
☐ Y2273
☐ Y2274
☐ Y2280
☐ Y2281
☐ Y2275
☐ Y2276
☐ Y2277
☐ Y2278
☐ Y2279
☐ Y2282
☐ Y2283

0.25g Tips x 20 tips

Shade

- A1
A2
A3
A3.5
A4
A20
A30
B1
B2
B3
C2
C3
Incisal
Bleach White

Tips No.

- ☐ Y2284
☐ Y2285
☐ Y2286
☐ Y2287
☐ Y2288
☐ Y2294
☐ Y2295
☐ Y2289
☐ Y2290
☐ Y2291
☐ Y2292
☐ Y2293
☐ Y2296
☐ Y2297