

Beautiful® Kids SA

Self-Adhesive, Nano-Hybrid Flowable Composite Restorative
with GIOMER Technology Inside — The Better Choice



Beautiful Kids SA

Self-Adhesive,
Nano-Hybrid Flowable
Composite Restorative with
GIOMER Technology Inside
The Better Choice

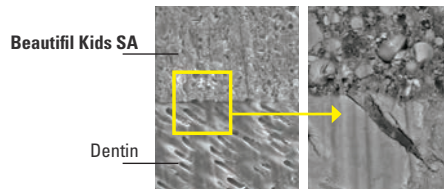
SERVE
PATIENTS
INCREASE
PRODUCTION
GO HOME
ON TIME!

*Shofu is dedicated to
manufacturing the highest
quality products utilizing our
innovative technologies to
enhance minimally invasive
cosmetic dentistry.*

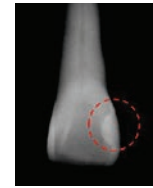
shofu.com
800.827.4638
customer-service@shofu.com

SELF-ADHESIVE TECHNOLOGY

Beautiful Kids SA has eliminated the need for the technique-sensitive bonding procedure. This quantum leap in dental materials technology allows clinicians to use **Beautiful Kids SA** for PRR (small Class I) and other non-load-bearing restorations without the need for a bonding agent! **Beautiful Kids SA's** unique chemistry provides a chemical bond and resin tag infiltration.



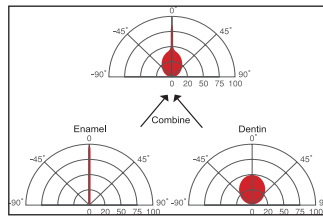
Beautiful Kids SA
Resin Tag
Infiltration
SEM Image



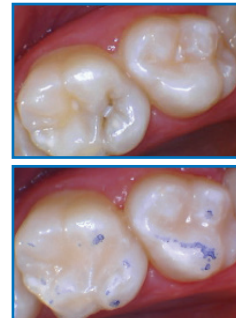
Beautiful Kids SA
Radiopacity

AESTHETICS

As a nano-hybrid, **Beautiful Kids SA** offers superior strength and polishability. The unique filler structure combines the light transmission and diffusion properties of both dentin and enamel to blend well with either primary or permanent dentition for picture perfect restorations.



Light transmission and diffusion
properties of Beautiful Kids SA



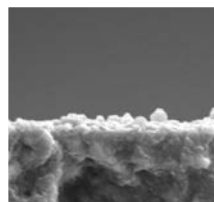
Shukan C. Kanuga, DDS



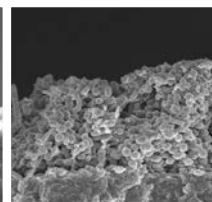
Mounika Falemban, DMD

GREATLY REDUCES SECONDARY DECAY (GIOMER)

Shofu's exclusive GIOMER technology gives **Beautiful Kids SA** the ability to release and recharge fluoride and other beneficial ions for the life of the restoration. As a result of these bioactive properties, your patients receive healthful benefits unavailable in any competitor—anti-bacterial effect, acid neutralization, strengthen tooth structure and more! These benefits were validated by a clinical study at the University of Florida Dental School where no failures or decay were found in any of the restorations—even after eight years!*

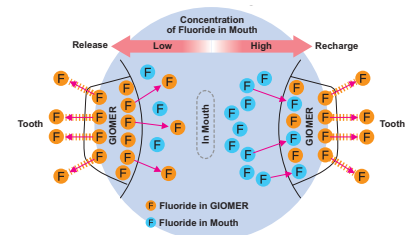


Beautiful Kids SA with
GIOMER Technology
Minimal Bacteria



Competitive Composite
Advanced Bacterial
Colonization

Fluoride Release & Recharge from GIOMER

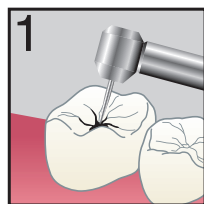


With the lack of a bonding layer, **Beautiful Kids SA** allows for the free flow of healthful ions from the GIOMER restorative into the tooth structure.

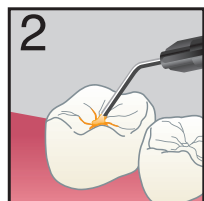
SHOFU

FAST AND EASY TO USE

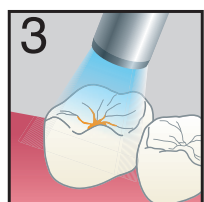
Preventive Resin Restoration (PRR) & Small Class I



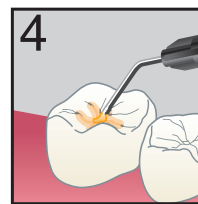
- Prep tooth as needed, rinse, leave damp.



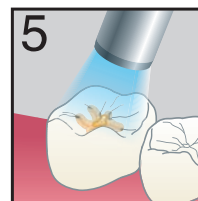
- Apply **Beautifil Kids SA** in a thin layer ($\leq 0.5\text{mm}$) with needle tip or hand instrument. Leave for 20 sec.



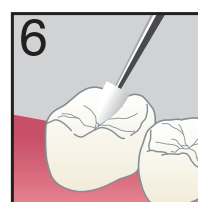
- Light cure for 5 sec (LED).



- Apply additional increments ($\leq 2\text{mm}$) as needed.



- Light cure each increment for 10 sec (LED).



- Finish and polish with **OneGloss PS** or another polisher.

Beautifil Kids SA is great for the management of caries in restless children!

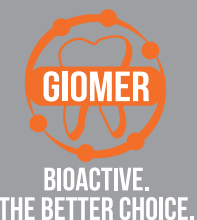
PROVEN QUALITY

In an effort to make dentistry better, faster, easier and more productive for the clinician, Shofu Dental once again sets the standard with the ultimate BPA-free restorative material—**Beautifil Kids SA**. With proven high shear bond strength to enamel (25.0 MPa) it assures optimal retention on both primary and permanent dentition.[†] Only Shofu has the proven expertise in bonding materials and resin restoratives necessary to make this technological leap.

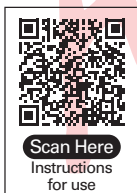
CONFIDENCE

For almost 100 years, Shofu Dental's dedication to quality has made us one of the world's most respected dental products manufacturers. What can we do for you?

^{*}Gordan V.V., et al. A clinical evaluation of a self-etching primer and a Giomer restorative material: Results at 8 years. JAM Dent. Assoc. 2007;138:621-62
[†]Dental Advisor. Biomaterials Research Report Laboratory Evaluation. M.Cowen, J.M. Powers 2019; Number 129



BEAUTIFIL® kids SA



BEAUTIFIL KIDS SA
2.2g syringe

Shade	Syringe
Primary (B1)	<input type="checkbox"/> Y1012
Permanent (A2)	<input type="checkbox"/> Y1011