

Ceramage® & Lite Art®



Zirconium Silicate Micro Ceramic
Indirect Restorative &
Light-Curing Coloring Paste

Visit www.shofu.com or call 800)827-4638

Zirconium Silicate Indirect Restorative

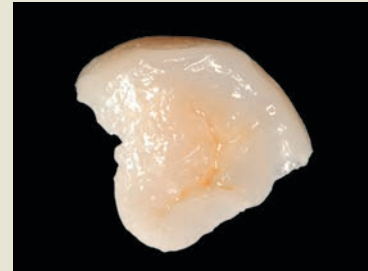
CERAMAGE®

Ceramage is a light activated zirconium silicate micro ceramic which creates indirect restorations that exhibit virtually the same light transmission as natural teeth and has a remarkable translucency. Ceramage bonds to a variety of substructures, including non-precious and high noble alloys. With an extensive shade selection for natural tooth and gum color reproduction, in addition to new bleach white shades, Ceramage can be used to create superior anterior and posterior crowns, veneers, implant-supported restorations and inlays and onlays. Ceramage full set of gum colors are also ideal for replicating gingival anatomy.

Ceramage provides an extraordinary combination of durability and strength. Harder than other light-cured materials, it is extremely resilient and more elastic than conventional ceramics.



Veracia® SA denture with Ceramage Gum Colors
Jim Collis, CDT



Carlos Ponce, CDT

The natural light transmission and fluorescence of the Ceramage pastes allow restorations to exhibit a vivid brilliant appearance in the patient's mouth – which exceed patient expectations. Ceramage virtually replicates the appearance and light diffusing properties of dentin and enamel.

The Ceramage PFS filler makes it possible to immediately match the light transmission properties of surrounding teeth without firing. A complete selection of translucent effect color modifiers provide the freedom to solve inter-oral challenges easier than with porcelain. The build-up of metal-free inlays and onlays are simple and fast to fabricate. The structure and composition of Ceramage allows controlled application and modeling, even on small anatomical details.

Light-Curing Coloring Paste

LITE ART[®]

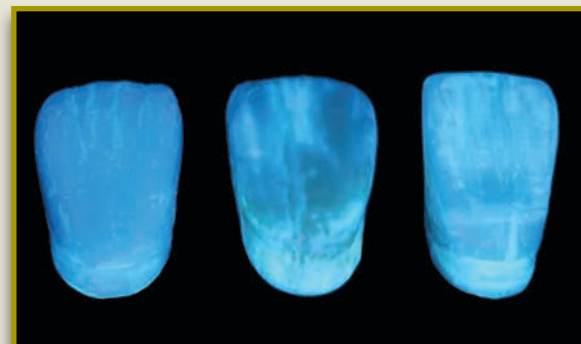
Lite Art light-curing coloring pastes are designed to recreate the internal effects and characteristics of natural teeth. The highly fluorescent, low viscosity pastes with a newly developed multi-functional monomer and photo initiator deliver excellent surface covering qualities.

Lite Art stains have extraordinary covering properties and can be applied nearly as thin as porcelain due to the microfine particle structure. Easily reproduce fine and specific natural internal accents by covering Lite Art with an incisal or translucent composite layer. Lite Art cures perfectly to resins, composites, artificial teeth and frameworks.

Lite Art paste stains have the natural fluorescence of teeth even in artificial light conditions. Lite Art has a unique coloring system using the classical primary colors, cyan, magenta and yellow. Mixing these will give you the exact natural color needed. The colors can be used individually or mixed. For more characteristic coloring, twelve premixed colors imitating the color effects of natural teeth and pigmentation of the gingiva, are available.



German Bär, MDT



Innovative Solutions for Natural Aesthetics

Ceramage

- Advanced Zirconium Silicate technology – 8 years clinical support
- Long-term color stability
- Accurately reproduces enamel and dentin
- Will not vitrify, which means no milky appearance or graying effects
- Works with all metals* – no CTE concerns because it light cures
- Superior handling non-sticky formula – requires no stacking
- Simulates the wear of natural dentition, excellent for implants, inlays, onlays, crowns and bridges
- Allows for conventional cementation and is extraordinarily biocompatible



Lite Art

- Has excellent curing characteristics due to newly developed multifunctional monomer and photo initiator
- Pastes are low viscosity – easy brush technique
- Fluorescence of natural teeth
- Wide range of expressive colors for individual characteristics
- Has supreme handling properties

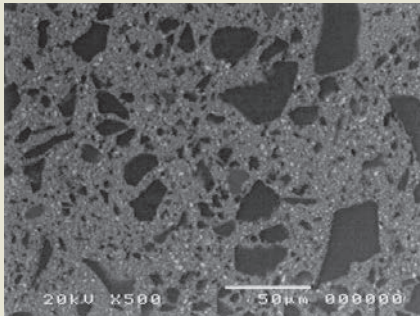


*titanium, high nobel, non-precious

Ceramage Technology & Innovation

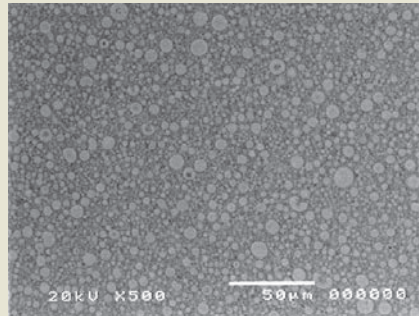
- Flexural and compressive strength beyond 140 MPa
- Excellent abrasion resistance of opposing dentition
- Transmission and diffusion of light with a refractive index similar to natural teeth
- Superior color stability over 8 years
- Perfect viscosity and modeling properties
- PFS provides superb polishability and is effortlessly achieved
- Microstructure resists plaque accumulation

Competitor



Inconsistent particle size between glass-fillers and matrix

Ceramage



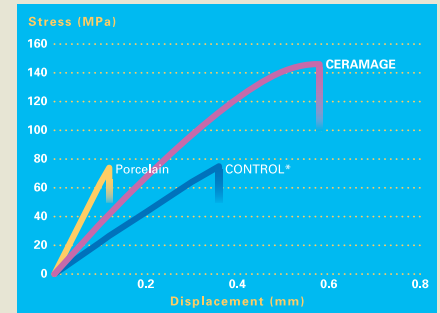
The homogenous micro-structure gives Ceramage excellent physical properties

Ceramage Technical Overview

Ceramage's unique composition and uniform structure give it similar characteristics to the finest ceramic materials, as well as wide applications for both metal and metal-free anterior and posterior restorations.

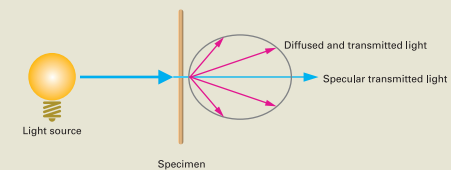
	Crown & Bridge Composite	Flowable Composite Resin
Vickers Hardness (MPa)	726	392
Flexural Strength (MPa)	146	132
Modulus of Elasticity (GPa)	10.7	6.0
Compressive Strength (MPa)	354	303
Indirect Tensile Strength (MPa)	62	58
Polymerization Shrinkage (Vol. %)	2.5	3.3
Toothbrush Abrasion (%)	0.43	0.74
Enamel Abrasion of the Antagonist (µm)	3.2	2.5
Working Time (min.)	>30	25

Flexural Strength

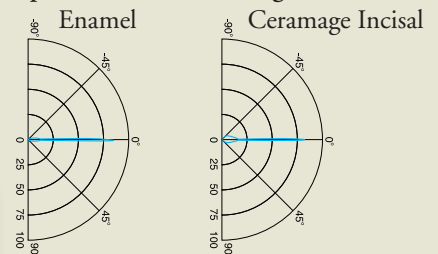


*Leading Indirect Restorative

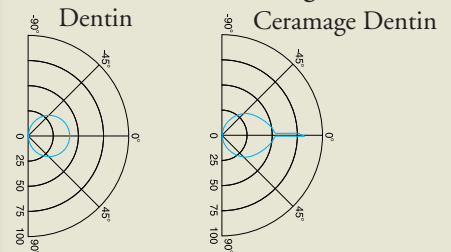
Transmission & Diffusion of Light



Specular Transmitted Light



Diffused & Transmitted Light



Product Ordering Information



Ceramage AB Set (PN 1801)

Economic introduction to this indirect restorative system that enables natural reproduction



Ceramage CD Set (PN 1802)

A practical addition to the Ceramage AB set



Ceramage Whitening Shades

WO "Super White" (PN 1924),
W1 (PN 1925)
W2 (PN 1926)
W3 (PN 1927)
Brighter than the "classical" tooth colors



Ceramage 8 Color

Standard Set (PN 1806)

aesthetic restorations in the shades A1-A4, B2, B3 and C3



Ceramage Intro Sets

Contains all necessary components: M.L. Primer bonding system the brushes for application of the opaques



Ceramage Full Gum

Color Set (PN 1804)

Re-establish naturally appearing gingival anatomy



Lite Art Full Set (PN 1970)

This set contains all components for authentic and individual characterization of resin and porcelain reinforced composites



Lite Art Single Colors

Each of the 15 ready-to-use single colors are available in specially developed and designed syringes



Lite Art Clear Liquid (PN 1986)

Adjust the intensity of the Lite Art paste stains



SHOFU INC. 11 Kamitakamatsu-cho, Fukuine, Higashiyama-ku, Kyoto 605-0983, Japan (www.shofu.co.jp)
SHOFU INC. Singapore Branch 10 Science Park Road, #03-12 The Alpha, Science Park II, Singapore 117684 (www.shofu.com.sg)
SHOFU DENTAL TRADING (SHANGHAI) CO., LTD. No. 645 Jiye Road, Sheshan Industrial Park, Songjiang, Shanghai 201602, China (www.shofu.com.cn)
SHOFU DENTAL CORPORATION 1225 Stone Drive, San Marcos, CA 92078-4059, USA (www.shofu.com)
SHOFU UK Riverside House, River Lawn Road, Tonbridge, Kent, TN9 1EP, UK (www.shofu.co.uk)
SHOFU DENTAL GmbH [CE/REF] Am Brüll 17, 40878 Ratingen, Germany (www.shofu.de)
 SHOFU is a registered trademark of SHOFU INC. All other trademarks and registered trademarks are the property of their respective holders. SHOFU INC. reserves the right to change specifications without notice.
 © Copyright 2012 SHOFU INC. All rights reserved.