

CERAMAGE® UP



Indirect Flowable
with Revolutionary
Handling Characteristics

Visit www.shofu.com or call 800-827-4638

Revolutionary Handling



Informed and educated patients demand treatments that are not only functional but also aesthetic, cost-effective and time-efficient. To address the growing needs of the patients, clinicians and dental laboratory technicians seek products that are not only the problem solvers but also present the ability to expand the range of treatment techniques in a simple and cost-effective manner, stimulating the growth and profitability.

A decade of research and development has led to the creation of a revolutionary indirect composite, CERAMAGE UP which sets new standards in the field of light-cured veneering and restorative materials.

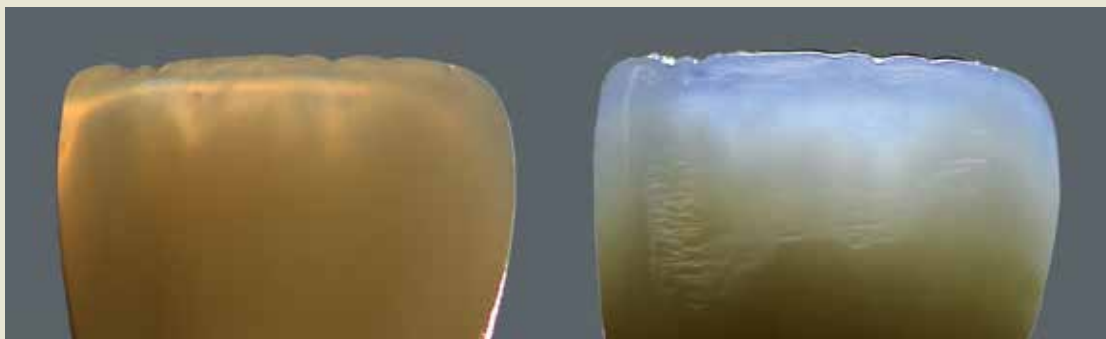
This new micro-hybrid restorative combines the best synergy of resin and ceramic materials.

It features a unique handling presented in a proprietary, pen-like delivery system which allows the dental laboratory technicians for



a free-hand layering application directly by dispensing or with a probe or a brush.

The opalescent incisal and translucent shades of CERAMAGE UP imitate the optical characteristics of natural teeth. This helps to create an appearance that demonstrates life-like vividness and brilliance under all light conditions.



A Flowable Solution

CERAMAGE UP uniquely combines the artistry and cost-effectiveness in a compact yet complete system.

Composed of 73-percent zirconium silicate, the micro-filler of CERAMAGE UP forms a protective skeleton that effectively absorbs masticatory forces and promotes resistance to breakdown phenomena.

The high compressive and flexural strength and low modulus of elasticity make this material a good candidate for a broad range of indirect anterior and posterior indications. Additionally, the hardness of CERAMAGE UP exhibits values closer to dentin, thus no excessive antagonist wear can be observed.

- Fully veneered crowns and bridges
- Fully veneered telescopic and implant suprastructures
- Attachment placement
- Occlusal restorations
- Inlays/Onlays
- Veneers
- Long-term transitional restorations
- Characterization of denture teeth





Versatile & Efficient

A high-performance composite system has to meet numerous criteria, including the ability to recreate shades for an aesthetic appearance; high strength and elasticity, excellent polishability and durability. CERAMAGE UP exceeds the expectations for the function and aesthetics by allowing dental laboratory technicians to create long-lasting and naturally-looking restorations.

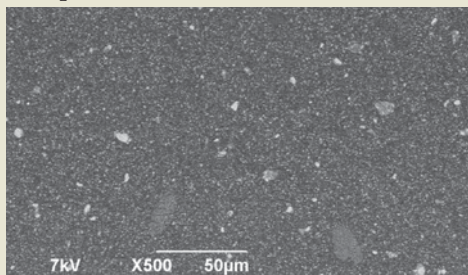
- Broad range of indications
- Easy and efficient reproduction on the VITA* Classical Shade System
- Natural aesthetics and opalescence
- High strength and abrasion resistance
- Reliable bonding to all ceramic substructures
- Excellent polishability and surface density
- Plaque-resistance and color stability



As a flowable material, CERAMAGE UP offers maximum versatility and reliability, especially in hard-to-reach areas where space is limited. Due to its low-viscosity thixotropic attributes presented in a proprietary delivery system, CERAMAGE UP assures a precise, bubble-free application that prevents product wasting.

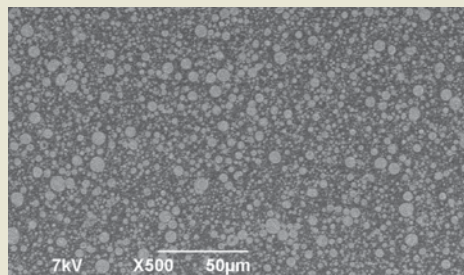
The spherically-shaped, high-density, homogenous filler of CERAMAGE UP achieves greater polishability, and aesthetic results that mimic natural dentition's optical properties of light diffusion and anisotropy.

Competitor



Conventional flowable composites often show a lower filler content and an irregular structural distribution.

CERAMAGE UP



Thanks to its homogeneous and dense nanostructure, CERAMAGE UP is both flowable and sculpable.



CERAMAGE UP Shades

CERAMAGE UP is a modular C&B composite system. To individualize the appearance of anterior and posterior restorations and to obtain an intermediate shade, the colors of CERAMAGE UP can be blended with each other or with Shofu's Lite-Art Stain System.

Basic Colors

Shade	A1	A2	A3	A3,5	A4	rootA	B1	B2	B3	B4	C1	C2	C3	C4	D2	D3	D4
Universal Opaque	AO1	AO2	AO3	AO3.5	AO4	rootAO	BO1	BO2	BO3	BO4	CO1	CO2	CO3	CO4	DO2	DO3	DO4
Cervical	—	AC1	AC2	—	—	—	BC1	BC2	—	—	CC1	CC2	—	—	DC1	DC2	—
Opaque Dentin	OD1	OD2	OD3	OD3.5	OD4	rootOD	OD1	OD2	OD3	OD4	OD1	OD2	OD3	OD4	OD2	OD3	OD4
Body	AB	AB	AB	AB	AB	rootAB	BB	BB	BB	BB	CB	CB	CB	CB	DB	DB	DB
Incisal	S5	S6	S6	S6	S6	S6	S7	S8	S9	S9	S8	S9	S9	S9	S9	S9	S9

The basic colours correspond to the VITA® Classical shade system.

More and more patients decide to have their teeth whitened. The CERAMAGE UP whitening shades help accurately adjust a patient's restoration to the desired effect of bleached teeth. The whitening shades W0 to W3 correspond to the bleach shades BL1 to BL4.

Whitening Colors

Shade	W0	W1	W2	W3
Universal Opaque	WO	WO	WO	WO
Body	WOB	W1B	W2B	W3B
Incisal	S6	S7	S7	S7

In addition to the incisal shades, the CERAMAGE UP system also includes numerous translucent shades. This wide spectrum of translucencies gives dental laboratory technicians the freedom to meet any aesthetic challenges. Among “gum aesthetics”, there are 10 gum shades to choose from.

Effect and Gum Colors

Universal Opaque	EO	EO	EO	EO	EO	EO	EO	EO	EO	EO
Translucent	T	HVT	LVT	T-Glass	BG	GT	CT-A	CT-B	—	—
Incisal	S6	S7	S8	S9	S9	S9	—	—	—	—
Concentrate	CT	CT	CT	CT	CT	CT	—	—	—	—
Gum Color	GUM-L	GUM-D	GUM-O	GUM-B	GUM-V	GUM-R	GUM-LP	GUM-PP	GUM-P	GUM-T

Product Ordering Information



CERAMAGE UP 2 Color Set (PN 2306)

Economic introduction to the CERAMAGE UP technique for restorations in shades A2 and A3



CERAMAGE UP 8 Color Set (PN 2305)

The basic assortment for the production of restorations in the VITA* Classical shades A1-A4, B2, B3 and C2



Lite Art Full Set (PN 1970)

This set contains all components for authentic and individual characterization of resin and porcelain reinforced composites



Lite Art Clear Liquid (PN 1986)

Adjust the intensity of the Lite Art paste stains



ML Primer (PN 1740)

For secure bonding of veneering composites to all common dental alloys



Solidilite V (PN 5105)

Sublite V (PN 5107)

Light-curing units for an efficient polymerization



AZ Primer (PN 3232)

For secure bonding of veneering composites to Zirconia



CRB - Ceraresin Bond (PN 1741)

For all repairs of porcelain or composite restorations



HC Primer (PN Y0005)

For secure bonding to Shofu Block & Disk HC



CADMaster CAD/CAM Kit (PN 0370BB)

An universal abrasive kit indicated for contouring, finishing, polishing and fine polishing



SHOFU INC. 11 Kamitakamatsu-cho, Fukuine, Higashiyama-ku, Kyoto 605-0983, Japan (www.shofu.co.jp)

SHOFU INC. Singapore Branch 10 Science Park Road, #03-12 The Alpha, Science Park II, Singapore 117684 (www.shofu.com.sg)

SHOFU DENTAL TRADING (SHANGHAI) CO., LTD. No. 645 Jiye Road, Sheshan Industrial Park, Songjiang, Shanghai 201602, China (www.shofu.com.cn)

SHOFU DENTAL CORPORATION 1225 Stone Drive, San Marcos, CA 92078-4059, USA (www.shofu.com)

SHOFU UK Riverside House, River Lawn Road, Tonbridge, Kent, TN9 1EP, UK (www.shofu.co.uk)

SHOFU DENTAL GmbH Am Brüll 17, 40878 Ratingen, Germany (www.shofu.de)

*VITA is a registered trademark of VITA Zahnfabrik, Bad Säckingen, Germany

SN309-0318