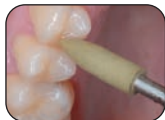









## COMPOMASTER®/COMPOMASTER® COARSE POLISHERS



- Carefully balanced blend of diamond particles
- Produces the smoothest finish & luster
- A simple two-step system
- Use **CompoMaster for:** composite restorations & hybrid ceramics

SHAPE CATEGORY	Bullet	Knife	Cup	Mini-Point	KN7	WH6	Unm. Wheel
SHAPE							
ISO#	040	090	065	030	125	120	220
<b>REGULAR (white &amp; yellow band)</b>							
HP (3 PK)	PN 0116	-	-	0119	0117	0118	-
CA (3 PK)	PN 0111	0112	0113	0114	-	-	-
FG (3 PK)	PN -	-	-	0134	-	-	-
<b>COARSE (no band)</b>							
HP (3 PK)	PN 116C	-	-	119C	117C	118C	131C (1 per pack)
CA (3 PK)	PN 111C	112C	113C	114C	-	-	-
FG (3 PK)	PN -	-	-	134C	-	-	-

### COMPOMASTER®/COMPOMASTER® COARSE POLISHERS

**PN**

**Product**

**0115 . . . . . Assortment Package - CA Shank**

Bullet, Knife, Cup, Mini-Point

**0120 . . . . . Assortment Package - HP Shank**

Bullet, Mini-Point, KN7, WH6

**115C . . . . . Coarse Assortment Package - CA Shank**

Bullet, Knife, Cup, Mini-Point

**120C . . . . . Coarse Assortment Package - HP Shank**

Bullet, Mini-Point, KN7, WH6

**See chart . . . . . Unmounted Wheel (1 per pack)**

**See chart . . . . . Mini-Point FG Shank Polishing Points (3 per pack)**

**See chart . . . . . Regular Polishing Points (3 per pack)**

**See chart . . . . . Coarse Polishing Points (3 per pack)**