

THE BETTER CHOICE:



SELF-ADHESIVE FLOWABLE
WITH BIOACTIVE BENEFITS

ELIMINATING THE BONDING AGENT

When treating certain populations, such as geriatric or pediatric patients, time is often of the essence. In these cases, a restorative product that eliminates the bonding process and offers exceptional ease of use (in addition to other essential features) can help increase efficiency and greatly improve patient experience.

From a restorative standpoint, removing the plastic barrier from the bonding agent means it doesn't separate filling from tooth, so there are no microgap problems – resulting in longer performance and reduced sensitivity. It is the better choice for those who prefer glass ionomers and other bioactive restorative materials.

Flowability facilitates precision placement and excellent adaptation to the anatomy. The unique filler structure of FIT SA combines the light transmission and diffusion properties of enamel and dentin to blend well with the surrounding dentition.



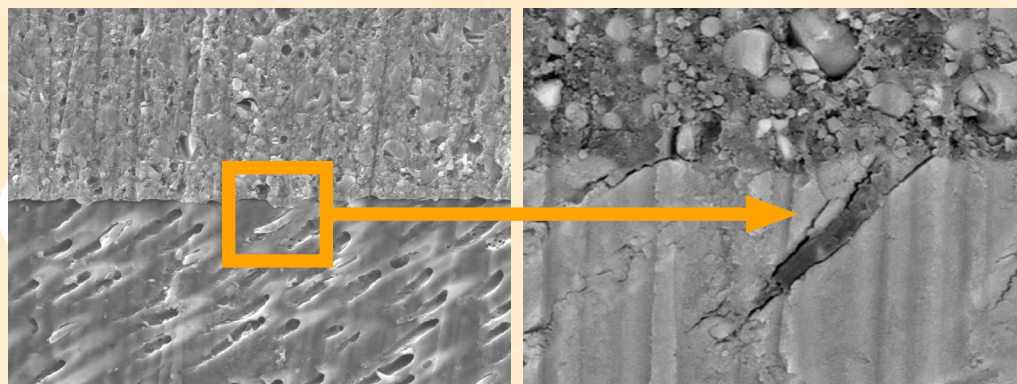
Figures courtesy of Mounika Falemban, DMD

Great for Preventative Resin Restoration (PRR)

Resin Tag Infiltration

FIT SA

Dentin



FOR THE PATIENT

FIT SA™, a comprehensive self-adhesive nano-hybrid flowable restorative with bioactive Giomer Technology. Produced by Shofu, it has eliminated the need for technique-sensitive bonding procedures.

Shofu's exclusive GIOMER Technology gives FIT SA the ability to release and recharge fluoride along with five other therapeutic ions for the life of the restoration. Giomer Technology offers anti-bacterial, anti-plaque, acid neutralization, reduces caries and minimizes postoperative sensitivity by releasing and recharging fluoride, strontium, sodium/sodium, aluminum, silicate, and borate. An eight-year independent clinical study recorded 100% retention rate, no secondary caries, failures, or postoperative sensitivity.



With the new Fit SA product using self-adhesive properties really changes the way we're able to practice. The flowable is able to attach without doing a bonding process. Being able to save time, as well as knowing it's going to have a 360 degree effect on ion transfer, it really helps to know we're doing a wonderful thing for the patient and treating the whole tooth.... The Giomer technology is really revolutionary. It's helping us to approach the patient as a preventive measure, not just as a retroactive measure in filling a problem. Instead we're able to have ion transfer and ion release that can help prevent new carious activity and to reduce sensitivity and to help that patient later down the road."

– Ross Isbell, DMD

CASE STUDY 1

CASE COURTESY OF JACK D. GRIFFIN, JR, DMD.
Prepare the teeth. Apply FIT SA self-adhesive flowable.
Then light cure, shape, and polish.



CASE STUDY 2

CASE COURTESY OF CHAD C. DUPLANTIS, DDS.

This patient of advanced age presented with lesions on teeth Nos. 28, 29, and 31. As this patient is at risk for caries, he was treated conservatively with bioactive restorations. Teeth Nos. 28 and 29 were restored with FIT SA, while tooth No. 31 was restored with a glass ionomer.

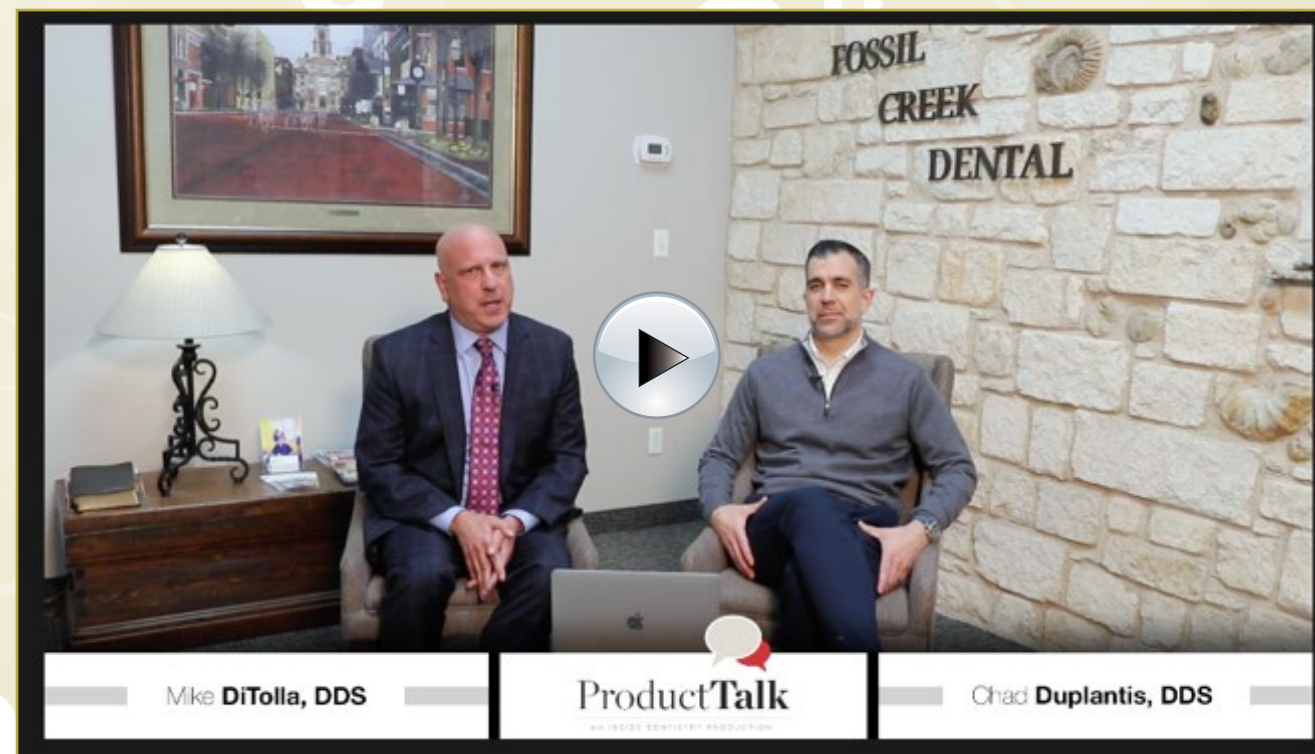


PROCEDURAL EFFICIENCY

PRODUCT TALK INTERVIEW WITH CHAD C. DUPLANTIS, DDS

“This product is great for my elderly patients,” he explains. “For example, for an elderly patient who has a posterior crown that is showing a little decay underneath at the gingival margin, I like to use FIT SA because it’s easy to remove the decay and repair that gingival margin without requiring the patient to go through the expense of receiving another crown. The decision to use FIT SA for margin repair is further supported by the benefits imparted by the material’s bioactive technology, and in the end, you’ve provided them with a restoration that will last a long time.”

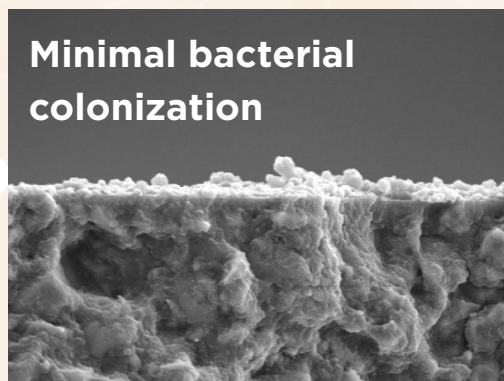
Speaking from his personal experience, Duplantis says that at first, clinicians may not be sure how a flowable composite that doesn’t require an adhesive will perform. “However, I think that the longer this product is out, the more indications we’re going to see, and people are really going to like using it. We are all looking to eliminate steps in order to run our practices more efficiently, and not needing a bonding agent is huge.”



BIOACTIVE BENEFITS IN A SELF-ADHESIVE COMPOSITE

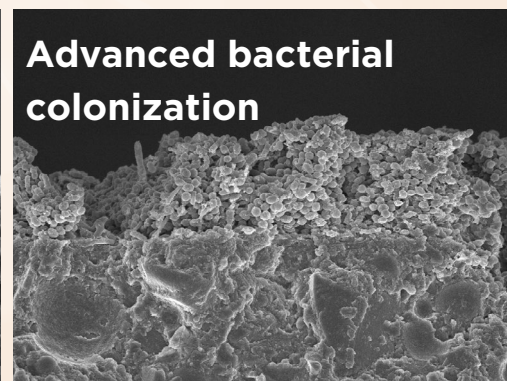
FIT SA delivers precision placement with its ideal handling, high bond strength for reliable adhesion, and total integration of the bioactive benefits. FIT SA provides unparalleled performance to restorations that are subject to minimal compressive force without the need of a bonding agent.

- Ideal handling for precision placement
- High bond strength for reliable adhesion
- Therapeutic bioactive Giomer Technology*
- Indicated for liner, small Class I (PRR), Class III and V
- Great for all patients especially geriatric and pediatric
- Great polishability, chameleon effect
- Available in two viscosities, low flow (F03) and high flow (F10)



**Minimal bacterial
colonization**

**Bioactive Giomer
Technology****



**Advanced bacterial
colonization**

**Conventional
Composites**

*Bioactive Giomer Technology contains: Fluoride, Strontium, Natrium/Sodium, Aluminum, Silicate, Borate. 8-year independent clinical study recorded 100% retention rate, no secondary caries, failures, or post-operative sensitivity.

**Asahi University School of Dentistry



LEARN MORE



**BIOACTIVE.
THE BETTER CHOICE.**

ABOUT THE COMPANY

Shofu Inc., headquartered in Kyoto, Japan, is a world-renowned manufacturer of dental materials and equipment, providing high-quality products for nearly a century. Shofu Dental Corporation, headquartered in San Marcos, California, is a company recognized for award-winning products, all contributing to successful dental treatments. Today, Shofu remains one of the top manufacturers of outstanding products used by dentists, dental lab technicians, dental hygienists, and dental assistants.

The preceding material was provided by the manufacturer. Statements and opinions are solely those of the manufacturer and not of the editors, publisher, or the Editorial Board of *Inside Dentistry*.

Inside
Dentistry

EBOOKS

THANK YOU TO OUR SPONSOR: SHOFU

FIT SA, Bioactive Self-Adhesive Flowable

ELIMINATED THE TECHNIQUE SENSITIVE BONDING STEP!

- > Ideal handling for precision placement
- > High bond strength for reliable adhesion
- > Therapeutic bioactive Giomer Technology
- > Indicated for liner, small Class I (PRR), Class III and V
- > Great for all patients especially geriatric and pediatric
- > Two viscosities



Jack Griffin, DMD



**SINCE SWITCHING TO
FIT SA, BIOACTIVE
SELF-ADHESIVE
FLOWABLE COMPOSITE,
PROCEDURES ARE
FASTER, EASIER,
AND MORE PROFITABLE!**



**Anti-Bacterial
Protection**



**Prevents Secondary
Decay***



Acid Neutralization



**Faster, Easier &
More Profitable**

*8-Year independent clinical study recorded 100% retention rate, no secondary caries, failures, or postoperative sensitivity.

**Visit shofu.com
Call 800.827.4638**

Shofu Dental Corporation San Marcos CA 92078

