

PRG Barrier Coat

A GIOMER VARNISH FOR
PROLONGED HYPERSENSITIVITY RELIEF

Visit www.shofu.com | Call 800.827.4638

SHOFU



Scan here for more
information on
Giomer Technology
& watch the **Acid
Neutralization** video.

PRG Barrier Coat provides me with a simple long term solution for dentin hypersensitivity as well as prolonged protection in high caries risk areas. And all this with Shofu's proven Giomer technology!

Fay Goldstep, DDS, FACD, FADI, FADFE
Toronto, Canada

This material can be used in so many ways with terrific results in the dental office!
Sam Halabo, DMD
San Diego, California

MULTIPLE USES



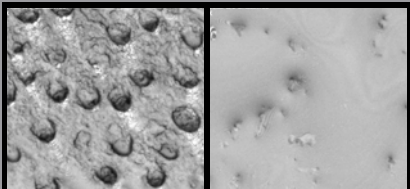
Areas around orthodontic brackets



Hard to brush areas

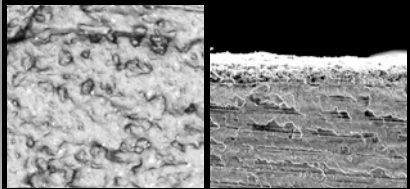


Exposed root surface



Open dentin tubules—before application

Sealed after PRG Barrier Coat application



Dentin tubules remain sealed after brushing the tooth 2000 times

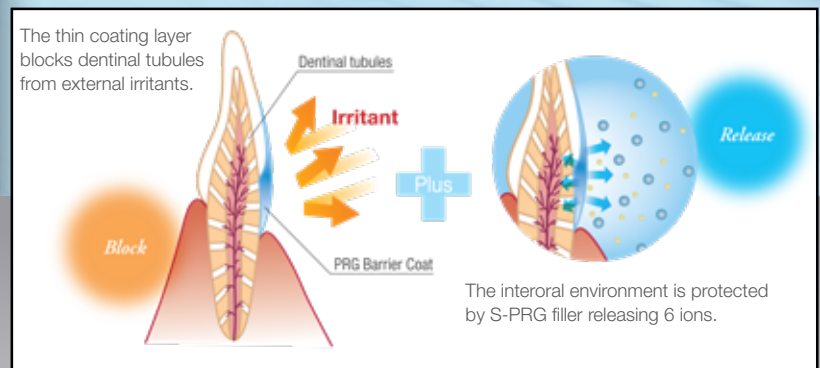
The thin layer has no effects to aesthetics

PRG Barrier Coat

PRG Barrier Coat is a light-cured, bioactive, resin based varnish formulated for prolonged desensitization of dentinal tubules incorporating Giomer technology.

- Blocks and protects from external irritants for up to 6 months
- Fluoride release and recharge ability
- Excellent self-adhesive properties allows thin coating on flat and slanted surfaces (15um) – aesthetic results
- Acid neutralization and anti-plaque effect
- Simple and quick procedure
- HEMA-free, Acetone-free, and Alcohol-free
- Indicated for a variety of applications - orthodontic brackets, hard to brush areas, exposed root surface, newly erupted molars, white spots and areas of hypersensitivity

Visit www.shofu.com | Call 800.827.4638



Order Information

- Part Number 1786
- 8 Base units, .02mL ea.
- 1 Active, .09mL
- 8 Brushes
- *Up to 12 teeth per patient application



Shofu Dental Corporation
1225 Stone Drive
San Marcos, CA
92078-4059, USA

SN246-1018

Hypersensitivity Relief