



# SOLUTIONS BY SHOFU

2026 | THIRD QUARTER



## — 2026 THIRD QUARTER —

**NEW!** **FX-LC** is a light-cure, resin-reinforced glass ionomer restorative that delivers high strength, efficiency, and value. Its New Generation Acrylamide monomer optimizes polymerization for superior compressive strength versus leading competitors, supporting longer-lasting restorations with less marginal breakdown. Unique Tri-Cure Technology (light, glass ionomer, and chemical curing) enables bulk filling up to 4mm while maintaining high fluoride release, self-adhesive bonding, and moisture tolerance—ideal for high-carries-risk and challenging cases. FX-LC eliminates the need for a separate conditioner, cures in just 10 seconds, and features an improved capsule design for better posterior access, visibility, and workflow efficiency.



VISIT | [SHOFU.COM](http://SHOFU.COM)  
CALL | 1-800-827-4638

SHOFU DENTAL CORPORATION | SAN MARCOS, CA

## EVENTS

### TRADE SHOWS

#### JULY

9-12 | GULF COAST DENTAL CONFERENCE | MIRAMAR BEACH, FL

#### AUGUST

3-6 | SHOFU NATIONAL SALES MEETING | IRVING, TX  
21-22 | SCCDS BAY AREA EXPO | SANTA CLARA, CA  
21-22 | SOUTHWEST DENTAL CONFERENCE | DALLAS, TX  
21-23 | WEST COAST DISTRICT DENTAL ASSOCIATION  
NAPLES, FL

#### SEPTEMBER

10-12 | ALAGD'S EMERALD COAST MEETING | DESTIN, FL  
17-19 | AOS ANNUAL MEETING | DALLAS, TX  
18-19 | TX AGD LONESTAR DENTAL CONFERENCE | AUSTIN, TX  
24-25 | MID-CONTINENT DENTAL CONGRESS | ST. LOUIS, MO  
24-26 | AGPO ANNUAL MEETING | DALLAS/PLANO, TX

### LECTURES & COURSES (HANDS-ON)

#### AUGUST

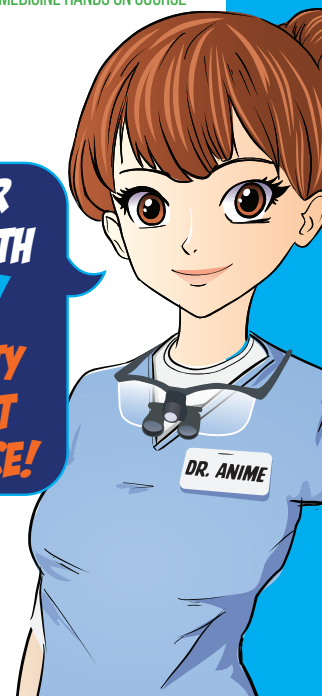
7 | ATLANTA DENTAL SUPPLY LECTURE WITH TIM BIZGA  
MOBILE, AL  
21 | ATLANTA DENTAL SUPPLY LECTURE WITH TIM BIZGA  
GUNTERSVILLE, AL  
28 | ATLANTA DENTAL SUPPLY LECTURE WITH ANKUR GUPTA  
SAVANNAH, GA

#### SEPTEMBER

10 | ALAGD'S EMERALD COAST COURSE HANDS ON COURSE WITH  
LANCE KISBY  
12 | WOEHLER RESEARCH GROUP LECTURE WITH JOYCE BASSETT  
BRECKINRIDGE, CO

17 | SPECTRUM DENTAL SOCIETY LECTURE WITH JOYCE BASSETT  
WORTHINGTON, OH  
21 | FORT DODGE DISTRICT IDA LECTURE WITH TIM BIZGA  
SPONSORSHIP  
24-25 | MID-CONTINENT DENTAL CONGRESS LECTURE WITH  
CHAD DUPLANTIS | ST. LOUIS, MO  
30 | RUTGERS COLLEGE OF DENTAL MEDICINE HANDS ON COURSE  
WITH ROBERT LOWE

**LOWER YOUR  
OVERHEAD WITH  
SHOFU!  
HIGH-QUALITY  
PRODUCTS AT  
THE BEST PRICE!**



FOR UP-TO-DATE INFORMATION ON  
TRADE SHOWS, SCAN QR CODE.



# QUARTER SPECIALS

2026 | THIRD QUARTER | SHOFU DENTAL CORPORATION

## NEW! BUY 3 FX-LC LV OR HV CAPSULES, GET 1 FX-LC LV A2 CAPSULE AT NO CHARGE!

**LV** (LOW VISCOSITY AVAILABLE IN PED0, BW, A1, A2, A3, B1, B2)

**HV** (HIGH VISCOSITY AVAILABLE IN A1, A2)

50/PK. MIX & MATCH SHADES/VISCOSITIES.

NOT AVAILABLE IN CANADA.



SCAN QR CODE  
FOR THE COMPLETE  
LIST OF FX-LC



## BUY 4 BEAUTIFIL FLOW PLUS OR BEAUTIFIL FLOW PLUS X SYRINGES, GET 1 BEAUTIFIL FLOW PLUS F00 A2 SYRINGE (2002) OR BEAUTIFIL FLOW PLUS X F00 A2 (YN2302) AT NO CHARGE! MIX & MATCH SHADES/VISCOSITIES.

MUST BE LIKE ITEM.



SCAN QR CODE  
FOR THE COMPLETE  
LIST OF BEAUTIFIL  
FLOW PLUS



SCAN QR CODE  
FOR THE COMPLETE  
LIST OF BEAUTIFIL  
FLOW PLUS X



## BUY 3 ONEGLOSS PS KITS

(0175, 0176, 0177, 0178)

## GET 1 ONEGLOSS PS ASSORTMENT KIT (0175)

AT NO CHARGE!



## BUY 3 BEAUTILINK SA CLEAR, IVORY, OPAQUE

1 OR 2 SYRINGES (C0203/C0204/C0205/  
C0212/C0213/C0214)

## GET 1 AT NO CHARGE!

MIX & MATCH SHADES.

MUST BE LIKE ITEM.



## BUY 4 BEAUTIFIL II TIPS OR

BEAUTIFIL II LS TIPS,

GET 1 BEAUTIFIL II TIPS A2 (1753)

OR BEAUTIFIL II LS TIPS A2 (Y2285)

AT NO CHARGE!

MIX & MATCH SHADES.

MUST BE LIKE ITEM.



SCAN QR CODE  
FOR THE COMPLETE  
LIST OF  
BEAUTIFIL II TIPS



SCAN QR CODE  
FOR THE COMPLETE  
LIST OF  
BEAUTIFIL II LS TIPS

## CONTACTS

CUSTOMER SERVICE	(800) 827-4638
TERRITORY MANAGERS - UNITED STATES	
ALABAMA   JEFF HAYES	(678) 300-9555
ALASKA   KAYLA SOPHINOS	(425) 218-0309
ARIZONA   ROBIN SMALLWOOD	(480) 225-9463
ARKANSAS   KEVIN CLEW	(504) 275-8899
CALIFORNIA	
LOS ANGELES METRO   CINDY ZEPEDA	(323) 707-6727
NORTH   CARRIE MAGGARD	(916) 606-2027
NORTH, SF BAY AREA   JON USELMAN	(408) 688-7410
SOUTH, OC & SD   BRIDGET WALDRON	(714) 403-9900
SOUTH   CELESTE HOLLIDAY	(916) 716-5445
COLORADO   JOHN DORAN	(719) 440-4087
CONNECTICUT   KAYCE WILLIAMS	(214) 636-0381
DELAWARE   JASON PLESEC	(440) 283-7254
FLORIDA	
NORTH   FRANK MALATESTA	(407) 883-3448
SOUTH   ANDREA COLOGGI	(754) 253-7890
GEORGIA   JEFF HAYES	(678) 300-9555
HAWAII   BRIDGET WALDRON	(714) 403-9900
IDAHO   KAYLA SOPHINOS	(425) 218-0309
ILLINOIS   PHIL HOWARD	(630) 642-8447
INDIANA   KEVIN BOURLAND	(734) 883-3953
IOWA	
EAST   PHIL HOWARD	(630) 642-8447
WEST   JOHN DORAN	(719) 440-4087
KANSAS   JOHN DORAN	(719) 440-4087
KENTUCKY   JAMES EGGERT	(615) 879-5298
LOUISIANA   KEVIN CLEW	(504) 275-8899
MAINE   KAYCE WILLIAMS	(214) 636-0381
MARYLAND   RICARDO YOUNGBLOOD	(410) 952-9097
MASSACHUSETTS   KAYCE WILLIAMS	(214) 636-0381
MICHIGAN   KEVIN BOURLAND	(734) 883-3953
MINNESOTA   CHAD JOHNSON	(612) 730-9842
MISSISSIPPI   KEVIN CLEW	(504) 275-8899
MISSOURI   JOHN DORAN	(719) 440-4087
ST. LOUIS METRO   PHIL HOWARD	(630) 642-8447
MONTANA   JOHN DORAN	(719) 440-4087
NEBRASKA   JOHN DORAN	(719) 440-4087
NEVADA	
NORTH   CARRIE MAGGARD	(916) 606-2027
SOUTH   CELESTE HOLLIDAY	(916) 716-5445
NEW HAMPSHIRE   KAYCE WILLIAMS	(214) 636-0381
NEW JERSEY   DINA KUBO	(201) 446-2054
NEW MEXICO   ROBIN SMALLWOOD	(480) 225-9463
NEW YORK	
NEW YORK CITY   KAYCE WILLIAMS	(214) 636-0381
UPSTATE   DINA KUBO	(201) 446-2054
WEST   RACHAEL SUTTON	(216) 849-5129
NORTH CAROLINA   JOE DUKE	(704) 506-1147
NORTH DAKOTA   DOUG MURPHY	(612) 327-0515
OHIO   RACHAEL SUTTON	(216) 849-5129
OKLAHOMA   TONI LAROUX	(469) 323-1101
OREGON   CARRIE MAGGARD	(916) 606-2027
PENNSYLVANIA	
EAST   JASON PLESEC	(440) 283-7254
WEST   RACHAEL SUTTON	(216) 849-5129
PUERTO RICO   ANDREA COLOGGI	(754) 253-7890
RHODE ISLAND   KAYCE WILLIAMS	(214) 636-0381
SOUTH CAROLINA   JOE DUKE	(704) 506-1147
SOUTH DAKOTA   DOUG MURPHY	(612) 327-0515
TENNESSEE   JAMES EGGERT	(615) 879-5298
TEXAS	
NORTH   TONI LAROUX	(469) 323-1101
SOUTH   HEATHER STAMPOUT	(830) 857-4033
HOUSTON   LESLIE GUIDRY	(281) 389-9002
UTAH   JOHN DORAN	(719) 440-4087
VERMONT   KAYCE WILLIAMS	(214) 636-0381
VIRGINIA   RICARDO YOUNGBLOOD	(410) 952-9097
WASHINGTON   KAYLA SOPHINOS	(425) 218-0309
WASHINGTON D.C.   RICARDO YOUNGBLOOD	(410) 952-9097
WEST VIRGINIA   JASON PLESEC	(440) 283-7254
WISCONSIN   CHAD JOHNSON	(612) 730-9842
WYOMING   JOHN DORAN	(719) 440-4087
TERRITORY MANAGERS - CANADA	
EAST   DAVID GOLDSHAW	(647) 298-7429
EAST   JUNE HONG	(647) 919-5863
EAST   MARTIN BESNER	(514) 993-6786
WEST   JANE ORVIS	(403) 352-6863
TERRITORY MANAGER - LATIN AMERICA	
SANTIAGO AYALA	(786) 606-1476



For complete ordering information, contact your authorized Shofu Dealer. Email, fax, or mail this page with a copy of your invoice to customer-service@shofu.com, 760.736.3276, or Shofu Dental Corporation 1225 Stone Drive, San Marcos, CA 92078-4059

- Proof of purchase on one Shofu authorized distributor invoice is required.
- Make sure that the dealer invoice clearly shows your name, address, phone number and products purchased. Incomplete or illegible invoices will not be honored.
- Bonus products will be shipped to you directly from Shofu Dental Corporation. CANADA: Bonus products will be shipped to you directly from your Shofu Canadian Dealer. Allow 8-10 weeks for delivery.
- Offer cannot be combined with any other Shofu special. Shofu reserves the right to discontinue or change this offer at any time.
- Offer valid until the end of September.

SN01-0426