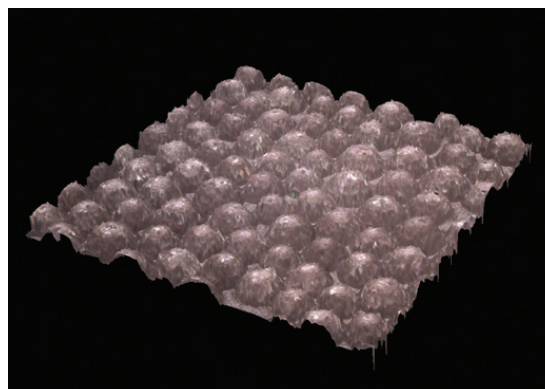




SUPER-SNAP X-TREME WITH ADVANCED 3D TECHNOLOGY

FROM SHOFU.

I know that many dentists are familiar with the fine finishing and polishing devices from Shofu. Since 1922, the company has been an industry-leading manufacturer of high-quality polishers and abrasives that exceed the demands of dental and laboratory professionals around the world. The company's extensive knowledge of direct and indirect restorative materials, combined with stringent quality control standards, help ensure the optimal contouring, finishing, and polishing no matter what the material. Abrasive finishers and polishers tend to stop working when the abrasive becomes clogged with grinded waste. This means you have to change to a fresh disk. These are the same Super-Snap disks with the elastic silicone shank mount that makes for easy placement of the disk onto the mandrel. The Super-Snap is designed for easy, fast, and safe contouring, finishing, and polishing of microfilled and hybrid composites. They are manufactured without a metal center. Now the company has introduced the Super-Snap X-Treme, the latest generation in extreme polishing that will exceed patients' expectations. This is a two-step polishing system with enhancements to the original green



and red Super-Snap disks. Super-Snap X-Treme aluminum oxide disks offer extra thickness to increase stiffness and durability while maintaining flexibility in the interproximal areas. The 3-D extra coating on the red superfine disk provides semispherical shaped grits covering the surface that allow space for the grinded wastes and provides a smoother polished surface with a high gloss. They are available in two sizes, the standard 12 mm and the 8 mm mini disposable aluminum oxide disks.

VISIT www.shofu.com for more information.