

Super-Snap® X-Treme Polishing Disks

Helping ensure patient satisfaction and produce beautiful restorations

Super-Snap® finishing and polishing disks are widely recognized and used in universal dental offices. The four-step, color-coded disk system is designed for easy, fast, and safe contouring, finishing, and polishing of all micro-filled and nano-hybrid composites.

Super-Snap disks feature an elastic silicone shank mount for easy placement onto the mandrel. They are manufactured without a metal center to eliminate the risk of gouging or discoloration of the composite and increase the stability of the disk during polishing. Disks are double sided and disposable to eliminate risk of cross contamination.

The new Super-Snap® X-Treme polishing disks represent the next generation of Super-Snap red (fine) and green (superfine) polishing disks. Super-Snap X-Treme disks provide an enhanced tactile feel and flexibility due to their increased thickness, resulting in greater durability. The red X-Treme disk was engineered with an innovative three-dimensional (3D) semispherical grit

technology inspired by the semi-conductor industry to offer greater gloss results.

Advanced 3D Technology

The 3D design of the aluminum oxide grits allows space to discharge debris while polishing to maintain a smooth disk surface, resulting in prolonged use due to less clogging. Fewer secondary scratches occur as well as a reduction in heat generation that could denature the material. The advanced technology, featured on the red X-Treme disk, produces an esthetic, glossy restoration to meet patients' increasingly high expectations.

X-Tra Thickness

Super-Snap X-Treme red and green disks are double the thickness of the original Super-Snap disks, increasing from 50 to 100 µm. The X-Tra thickness improves stiffness and durability while also maintaining flexibility in interproximal areas. Greater force can be applied when polishing composite with the thicker Super-Snap X-Treme disks, further contributing to the greater gloss result.

Versatility

Super-Snap X-Treme disks can be used with the original black (coarse) and violet (medium) Super-Snap disks to create a complete four-step system, or used exclusively as a two-step if the restoration is minimal and requires little contouring or finishing. Regardless the number of steps, the longer-lasting Super-Snap X-Treme disks are sure to shorten chair time and increase patient satisfaction.

The new Super-Snap X-Treme polishing disks are available in standard (12-mm) or mini (8-mm) sizes within a 100-piece kit, including both red and green X-Treme disks, or as 50-count individual disk refills. Suggested retail price per kit is \$47.60 and disk refills are \$25.05, available through your preferred dealer.

FOR MORE INFORMATION, CONTACT:

Shofu Dental Corporation

800-827-4638

www.shofu.com

Circle 65 on Reader Service Card

Disclaimer

The preceding material was provided by the manufacturer. The statements and opinions contained therein are solely those of the manufacturer and not of the editors, publisher, or the Editorial Board of *Inside Dentistry*.



FIG. 1

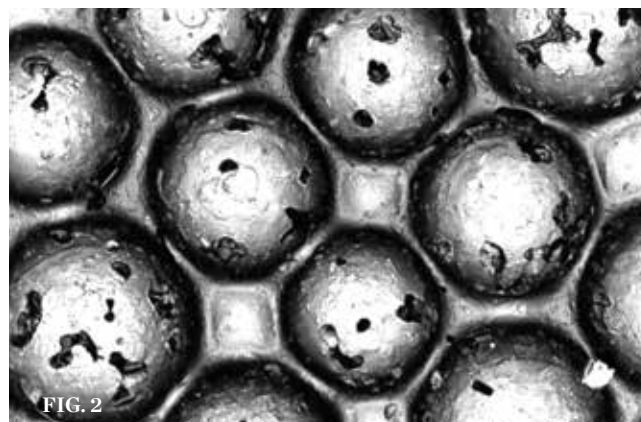
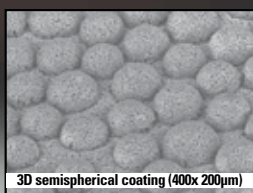


FIG. 2

(1.) New Super-Snap X-Treme polishing disks from Shofu Dental Corporation. (2.) Close-up view of red (fine) Super-Snap X-Treme disk.

Super-Snap X-TREMETM

FINISHING & POLISHING



3D semispherical coating (400x 200µm)

Advanced 3D Technology

Super-Snap X-Treme, the latest generation in X-Treme polishing, is designed to x-ceed the aesthetic x-pectations of patients today. Super-Snap X-Treme aluminum oxide disks offer x-tra thickness for greater flexibility and durability, and an advanced 3D semispherical surface coating to provide X-Treme gloss results. Super-Snap X-Treme—taking polishing to the next level!



SN223-0314

- Long lasting with 40% greater gloss than leading competitor
- Advanced 3D technology - semispherical shaped grits
- Reduces clogging, secondary scratches and maintains smoother surface contact
- X-Tra thickness improves durability, prevents warping and prolongs use
- Greater tactile feel and flexibility

