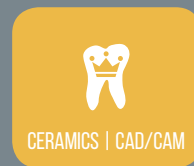




SOLUTIONS BY SHOFU

2018 | SECOND QUARTER | ISSUE 02 | VOLUME 06



— 2018 SECOND QUARTER EDITION —

ON THE COVER | CAD/CAM STAIN KIT FOR CHAIRSIDE CAD/CAM RESTORATIONS

FEATURE ARTICLE | CHARACTERIZATION OF A TRANSITIONAL RESTORATION MILLED FROM A HYBRID-CERAMIC MATERIAL

IN THE NEWS | BLOCKBUTLER FOR CAD/CAM BLOCKS

EVENTS | TRADESHOWS, LECTURES, HANDS-ON & INVISALIGN COURSES

BACK COVER | YOUR SHOFU CONTACTS & QUARTER SPECIALS

VISIT | WWW.SHOFU.COM

CALL | 1-800-827-4638

SHOFU DENTAL CORPORATION | SAN MARCOS, CA

CAD/CAM STAIN KIT FOR CHAIRSIDE CAD/CAM RESTORATIONS

Universal and simple to use, **CAD/CAM Stain Kit for CAD/CAM and Hybrid Ceramics** will help clinicians improve the aesthetics of CAD/CAM restorations fabricated chairside.

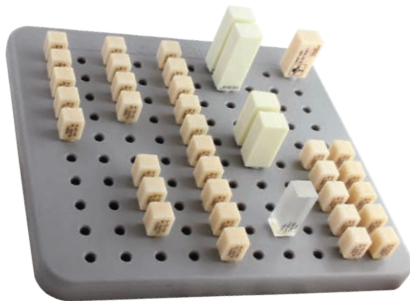
Incorporating a novel technology with the ability to mimic the natural dentition's optical properties, the assortment of stains featured in the **Lite Art** kit will help clinicians turn a dull-looking crown, bridge, inlay, onlay, or a veneer into a life-like restoration, in no time.

The proprietary chemical composition of the **Lite Art** also supports a reliable adhesion to a variety of other substrates, including resin-based direct and indirect materials, and PMMA. The low viscosity of the **Lite Art** stains allows for a precise application and prevents product's wasting. All stains can be layered alone or blended together to effortlessly replicate the various characteristics of natural dentition.



BLOCKBUTLER

Efficient storage and organization of CAD/CAM blocks is possible with the **BlockButler**. This 100-hole silicone bur holder can house blocks of all sizes and it can be mounted on a wall or placed in a drawer for immediate access to the blocks' inventory.



CHARACTERIZATION OF A TRANSITIONAL RESTORATION MILLED FROM A HYBRID-CERAMIC MATERIAL

In dentistry, planning a successful clinical case involves a collaboration between a clinician and a laboratory technician. The ability to provide a long-term temporization for an individualized restoration is an important phase of a successful treatment. It gives both, a dentist and a patient the confidence that a final restoration will meet the requirements of functionality and aesthetics. Furthermore, when fabricating cases, specifically for the anterior region, patients concerned with the quality and aesthetics of a temporary restoration may not accept a monochromatic solution. Therefore, choosing an appropriate transitional material and a shade adjustment system is essential to the success of a treatment.

In the following case, a new hybrid-ceramic CAD/CAM material, **Shofu Block HC** in a shade A2-LT/M (low translucency/medium size) was used to fabricate an

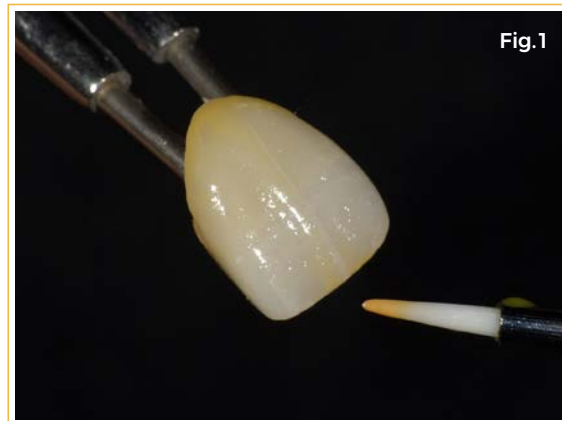


Fig.1 Lite Art white, khaki, cyan and orange stains were applied to the restoration to achieve the characterization effects of natural dentition.

anterior restoration. This material was chosen because it meets all the criteria of an effective long-term provizionalization. Demonstrating excellent physical properties, Shofu Block HC is also a good candidate for many other indications, including permanent anterior/posterior restorations for inlays/onlays, full-contour crowns, and implant-supported cases.

TRADE SHOWS (OPERATORY | LABORATORY)

APRIL

- 18-21 AMERICAN ACADEMY OF COSMETIC DENTISTRY CHICAGO, IL
- 26 ONTARIO DENTAL ASSOCIATION / ANNUAL SPRING MEETING | BOOTH 419 CHICAGO, IL

MAY

- 4-5 LAB SUMMITT CHARLOTTE, NC
- 5-8 AMERICAN ASSOCIATION OF ORTHODONTISTS | BOOTH 324 WASHINGTON, D.C.
- 17-19 CALIFORNIA DENTAL ASSOCIATION SOUTH | BOOTH 1128 ANAHEIM, CA
- 19 LAB DAY WEST ANAHEIM, CA
- 25-27 AMERICAN ACADEMY OF PEDIATRIC DENTISTRY | BOOTH 806 HONOLULU, HI
- 25-29 JOURNÉES DENTAIRES INTERNATIONALES DU QUÉBEC MONTREAL, QC, CANADA

JUNE

- 8-9 THE NEW DENTIST CONFERENCE AUSTIN, TX
- 21-23 FLORIDA NATIONAL DENTAL CONVENTION | BOOTH 1015 ORLANDO, FL

LECTURES & COURSES (LECTURE | HANDS-ON COURSE | WEBINAR)

APRIL

- 6 JACK GRIFFIN - LECTURE RICHMOND, BC, CANADA

- 8 "SLEEP APNEA" WITH JEFF HOROWITZ LOMA LINDA, CA
- 13 "WHAT'S HOT AND GETTING HOTTER" WITH HOWARD GLAZER ATLANTIC BEACH, NY
- 13 CDE WORLD EVENT PHILADELPHIA, PA
- 18 "HOW TO EAT CANDY & POTTY MOUTH" WITH BRIAN NOVY PERRYSBURG, OH
- 18 HANDS ON COURSE @ TOLEDO DENTAL SOCIETY MEETING WITH DAN WARD PERRYSBURG, OH
- 18 "I'VE GOT A FEW TRICKS UP MY SLEEVE" WITH JEFF HOROWITZ BROOKLYN, NY
- 19 "WHAT'S HOT AND GETTING HOTTER" WITH HOWARD GLAZER CHICAGO, IL
- 19-20 DENTAL PHOTOGRAPHY AND ZERO SENSITIVITY WITH MARTY ZASE CHICAGO, IL
- 20 WHITE COMPOSITE COURSE WITH FRANK MILNAR CHICAGO, IL
- 20 CDE WORLD EVENT EAST RUTHERFORD, NJ
- 20 "THE ESTHETICS OF OCCLUSION" WITH ROBERT LOWE OXNARD, CA
- 20-21 EXCELLENCE IN DENTAL PRVISIONALS AND DENTAL MATERIALS WITH SHANNON BRINKER CHICAGO, IL
- 21 HANDS ON RESTORATIVE COURSE WITH MILNAR AND LESAGE CHICAGO, IL
- 25 "ACHIEVING SUPERB RESULTS WITH EVERY DAY BREAD AND BUTTER DIRECT AND INDIRECT PROCEDURES" WITH SAM HALABO VAN NUYS, CA
- 26 HANDS ON COURSE WITH CARLA COHN MILTON, WA
- 26-27 EXCELLENCE IN DENTAL PRVISIONALS AND DENTAL MATERIALS WITH SHANNON BRINKER MINNESOTA
- 27 LECTURE WITH ROBERT LOWE FEASTERVILLE, PA
- 26-28 DAWSON ACADEMY: RECORDS COURSE - CAMERA CHESAPEAKE, VA
- 26-30 "WHAT'S HOT AND GETTING HOTTER" WITH HOWARD GLAZER - SMILES IN THE SUN LONG BOAT KEY, FL

With a total milling time of ca. 11 minutes, with Cerec inLab, under wet conditions, Shofu Block HC showed outstanding machinability in terms of damage tolerance, wear of CAD/CAM instruments, and the ability to be milled in a very low thickness. The evidence also indicated that the restoration achieved ideal marginal integrity and fit.

After milling, the sprue was removed and contacts and occlusion were minimally adjusted with a **Dura-Green Stone**. In order to provide reliable mechanical retention, the surface of the restoration was roughened by sandblasting with aluminium oxide particles. Strong and durable chemical retention for the successive staining was obtained with **CeraResin Bond**.

The restoration was naturalized with **Lite Art Color Pastes** incorporating white, khaki, cyan and orange stains, which demonstrates the ability to mimic the natural dentition's optical properties (**Fig. 1**). To achieve the characterization effects of natural dentition, the stains were diluted with **Lite Art Clear Liquid** and polymerized for 1 minute.

An overlay of an indirect flowable composite, **Ceramage 59**, was applied to enhance the translucency, to create the depth and space, and to shield the restoration from damages. After final curing, minor surface contouring accentuating the morphology and texture was created with a **Dura-Green Stone** and a **diamond bur**.

CompoMaster, a two-step diamond-filled abrasive system, was used to finish and pre-polish the restoration without impeding its complex anatomical details. The final restoration was polished with a bristle brush and **Dura-Polish DIA Polishing Paste** to obtain the wet, glossy sheen (**Fig. 2**).



Fig. 2 The final crown demonstrates a naturally beautiful, glossy sheen, highlighting the optical abilities of Lite Art stains to deliver functional and aesthetic restorations.

The presented case was authored by Abel Fernandez, CDT, MDT and published in the Inside Dental Technology magazine, February 2018 Edition

MAY

- 4-5 HANDS ON WITH RON KAMINER
- 5 "WHAT'S HOT AND GETTING HOTTER" WITH HOWARD GLAZER
- 11 "LET'S GROW TOOTH" WITH JACK GRIFFIN
- 11 THE MAC DENTISTRY & THE TO SMILE OR NOT TO SMILE WITH TOM DUDNEY
- 16-19 ACT DENTAL - NAPA PROGRAM
- 17 LECTURE @ CDA SOUTH WITH TODD SNYDER
- 18 CDA SOUTH CORPORATE FORUM - "TEAM APPROACH TO ALIGNER SUCCESS" WITH DR. ATAI AND SHANNON BRINKER
- 17-19 DAWSON ACADEMY: RECORDS COURSE - CAMERA

JUNE

- 8 CDE WORLD EVENT
- 8 "CLINICAL TREATMENT PLANNING AND PROBLEM SOLVING - WHEN IT DOESN'T GO BY THE BOOK" WITH ROBERT LOWE
- 8 "WHAT'S HOT AND GETTING HOTTER" WITH HOWARD GLAZER
- 9 "WHAT'S HOT AND GETTING HOTTER" - HANDS ON COMPOSITE COURSE WITH HOWARD GLAZER
- 15 MINIMALLY INVASIVE DENTISTRY: CURRENT CONCEPTS, TECHNIQUES & MATERIALS FOR MAXIMUM EFFICIENCY - A HANDS ON EXPERIENCE WITH RON KAMINER
- 15-16 HANDS ON COURSE WITH CARLA COHN
- 21 "EXCELLENCE PROVISIONALS AND RESTORATIVE" WITH SHANNON BRINKER

PENNSYLVANIA
CHICAGO, IL
SANTA ROSA, CA
NEWARK, NJ
NAPA, CA
ANAHEIM, CA
ANAHEIM, CA

ST. PETERSBURG, FL

FALLS CHURCH, VA
BOSTON, MA

PERDIDO BEACH, AL
PERDIDO BEACH, AL

BOSTON, MA

VIRGINIA BEACH, VA
WASHINGTON

- 21-23 LECTURE AND HANDS ON INDIRECT DENTISTRY WITH RON KAMINER
- 22 CDE WORLD EVENT
- 22-23 "EXCELLENCE PROVISIONALS AND RESTORATIVE" WITH SHANNON BRINKER
- 29 CDE WORLD EVENT

INVISALIGN COURSES

APRIL

- 12 ELEVATE - ORTHODONTIC COURSE
- 26 ELEVATE - ORTHODONTIC COURSE
- 26 ELEVATE - ORTHODONTIC COURSE

MAY

- 3 ELEVATE - ORTHODONTIC COURSE
- 3 ELEVATE - ORTHODONTIC COURSE
- 10 ELEVATE - ORTHODONTIC COURSE
- 17 ELEVATE - ORTHODONTIC COURSE

ORLANDO, FL
MILWAUKEE, WI
ORLANDO, FL
ATLANTA, GA

CARLSBAD, CA
RODGERS, AR
TORONTO, ON, CANADA

SPRINGFIELD, MA
LAS VEGAS, NV
MILWAUKEE, WI
LONG ISLAND, NY

QUARTER SPECIALS

2018 | SECOND QUARTER | SHOFU DENTAL CORPORATION

BUY 10 BEAUTIFIL II TIPS OR SYRINGES*
GET 10 SUPER-SNAP X-TREME STANDARD (12MM) KITS (0506)
AT NO CHARGE



SCAN QR CODE
 FOR THE COMPLETE
 SELECTION OF
 BEAUTIFIL II



*OF LIKE ITEM, MIX & MATCH SHADES

**NEW! BUY 1 BURBUTLER
 CADMASTER CAD/CAM
 KIT (0370BB)**
**GET INCLUDED BONUS ITEM:
 10-HOLE DIAMOND WHITE
 BURBUTLER (8210DWC)**
AT NO CHARGE



NOT AVAILABLE IN CANADA

NEW! BUY 1 CAD/CAM STAIN KIT (2150-SS)
GET INCLUDED BONUS ITEM: HC PRIMER (Y0005)
AT NO CHARGE



NOT AVAILABLE IN CANADA

CANADIAN OFFER: BUY 2 BEAUTISEALANT (1798)
GET 4 FL2 FG DURA-WHITE STONES 12 PACKS (0244)
AT NO CHARGE



CONTACTS

CUSTOMER SERVICE | 1-800-827-4638

HORTENCIA HERNANDEZ EXT | 221
 PALOMA RIEDEL EXT | 220
 KAYLA ZAYAS EXT | 243

SALES MANAGERS

DAN CHRISTENSEN | HAWAII 925-209-5618
 MICHAEL GAINSBURG | LATIN AMERICA 813-731-9928
 CHRISTINE NGUYEN | S- CA, S- NV 951-545-6861
 LENNY SULKIS 508-397-4491

UNITED STATES

SANTIAGO AYALA | S- FL, PUERTO RICO 305-582-8797
 KEVIN BOURLAND | IN, MI, N- OH 734-883-3953
 BOB COLEMAN | DE, S- NJ, E- PA 717-503-3281
 PATRICK DELAURA | AZ, S- CA 949-842-0872
 JOHN DORAN | CO, KS, MO, MT, NE, UT, WY 719-481-9577
 BOB GARNICA | IA, IL, WI 630-967-8087
 RENEE GOLD | CT, BRONX, WESTCHESTER 914-522-1096
 DAMON GRANT | AR, OK, N- TX 704-737-8434
 KAYCE HOLLINGSWORTH | NM, S- TX 214-636-0381
 LISA HULL | AL, GA, E- TN 404-984-9886
 HEATHER IRWIN | E- KY, S- OH, W- PA, WV 412-400-4621
 DINA KAMMIN | N- NJ, NYC, MANHATTAN 201-446-2054
 NORMA LUNA | S- CA 562-419-0463
 LE ANN MACDONALD | N- FL 321-624-6483
 CARRIE MAGGARD | N- CA, NV, OR 916-606-2027
 JUAN MERCADO | BROOKLYN, LONG ISLAND, QUEENS, STATEN ISLAND 917-638-1099
 DOUG MURPHY | MN, ND, SD 612-327-0515
 BILL TURNER | NC, SC 704-608-1894
 KATHRYN WEARNE | AK, ID, WA 425-422-1708
 RICARDO YOUNGBLOOD | MD, VA 410-952-9097
 RICH ZALL | MA, ME, NH, NY, RI, VT, UPSTATE NY 781-244-2781

CANADA

SARAH BERMEL 604-339-5017
 DAVID GOLDSHAW 647-298-7429
 BILLY HO 647-961-8826



For complete ordering information, contact your authorized Shofu Dealer. Fax this page with a copy of your invoice to 760.736.3276 or mail to: Shofu Dental Corporation 1225 Stone Drive, San Marcos, CA 92078-4059

- Make sure that the dealer invoice clearly shows your name, address, phone number and products purchased. Incomplete or illegible invoices will not be honored.
- Free products will be shipped to you directly from Shofu Dental Corporation. CANADA: Free products will be shipped to you directly from your Shofu Canadian Dealer. Allow 2-4 weeks for delivery.
- Offer cannot be combined with any other Shofu special. Shofu reserves the right to discontinue or change this offer at any time.