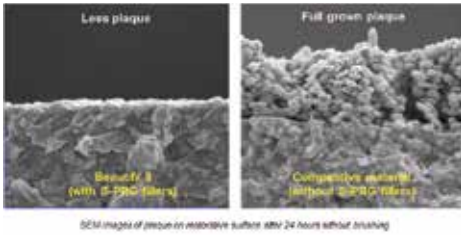




Clinical benefits of Giomer (S-PRG) technology.



1 Incorporates proprietary Giomer (S-PRG) technology clinically vetted in 8- and 13-year studies; combines the clinical benefits of glass ionomers with the strength, durability, and esthetics of nanohybrid composites

2 Releases and recharges fluoride, strontium, and four other beneficial ions (aluminium, borate, sodium, silicate); inhibits plaque formation and growth (see photo); neutralizes acid for improved oral health

3 Expands the range of treatments typically conducted at the bench in a laboratory; eg. chairside composite veneers instead of more invasive and costly porcelain veneers



Photo credit: Frank J. Milnar, DDS, AAACD
Products featured: Beautiful II Gingiva Dark-Pink, Beautiful II A2, Beautiful II Enamel Low-Value Translucent & High-Value Translucent

5 Offers high-quality treatments, chairside, at a lower cost and minimal wait-time to the patient

4 Less invasive and more affordable treatments increase patient satisfaction and bring additional revenue to the general practice



Beautiful II Enamel-colored Composites

Developed as an addition to the award-winning Beautiful II, a fluoride-releasing, bioactive, nanohybrid resin composite line, Beautiful II Enamel-colored composites provide general practitioners with the ability to offer highly esthetic and long-lasting bioactive restorations more efficiently and at a lower cost. They expand the range of treatment modalities in a simple, cost-effective manner, contributing to the practice's growth and profitability.

SPECIFICATIONS:

Bioactive, highly filled (ca. 83 wt%), with outstanding physical, mechanical, and optical properties (high compressive and flexural strength, ca. 320 MPa and 130 MPa, respectively)

Radiopacity 25% greater than enamel (2.5 Al:mm)

Competitively priced: 2.5g syringe, SRP: \$37.50



Shofu
(800) 827-4638 • www.shofu.com • RSC# 84

Find out more at www.shofu.com