

Beautiful[®] II & Beautiful[®] II LS

FLUORIDE RELEASING, BIOACTIVE,
NANO-HYBRID COMPOSITE

VISIT WWW.SHOFU.COM

SHOFU

OR CALL 800.827.4638



PRG
Technology
Giomer

miCD
Minimally Invasive
Cosmetic Dentistry

Beautiful[®] II

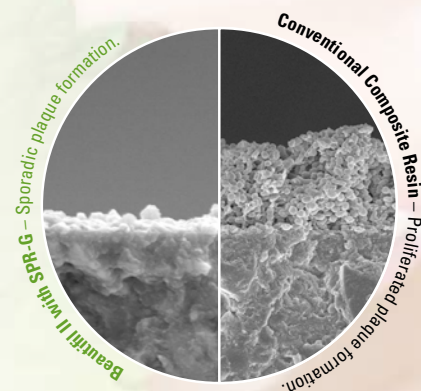
Create indistinguishable restorations with optical characteristics of natural teeth. The Beautiful II filler structure has been developed to simulate the internal structure of natural teeth with ideal light transmission and optical characteristics. The moderate translucency and light transmission of enamel combined with the light-diffusion of dentin offers predictable aesthetics with a close shade match to natural teeth.

Beautiful[®] II PINK & WHITE

Beautiful II has excellent versatility with natural shade reproduction that can be achieved with a chameleon effect, using a single shade that blends well with surrounding teeth making the restoration undetectable. In aesthetically demanding cases additional shades can be used to achieve exceptional results.

- Clinically proven in 8- and 13-year clinical studies^{1,2}
- Excellent physical properties

- Superior handling – easy sculpting without slumping or sticking
- High filler load and high flexural strength ensure long-term stability
- Sustained fluoride release and recharge
- Anti-plaque affect minimizes plaque adhesion, inhibits bacterial colonization and plaque accumulation



GIOMER TECHNOLOGY

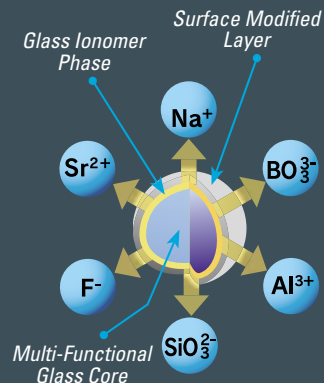
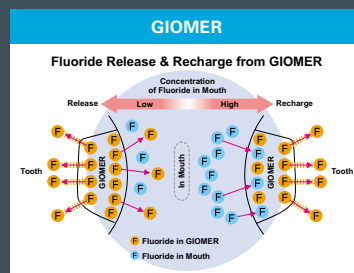
taking dentistry to the next level

The Beautiful resin composite lines contain Shofu's proprietary Gioner technology, a bioactive surface pre-reacted glass (S-PRG) filler that actively releases six beneficial ions including fluoride.

Gioner materials have been clinically vetted in a series of long-term clinical trials. An eight-year clinical research recorded 100% retention rate with intact esthetics, no secondary caries, no failures and no post-operative sensitivity.¹ A thirteen-year recall study demonstrated 96% of restorations with no secondary caries, in a 66% retention rate.²

Gioners unique ability to not only release but recharge fluoride helps to provide continual protection to the tooth. Gioner benefits:

- Decrease in acid production of cariogenic bacteria
- Formation of an acid-resistant layer
- An anti-plaque effect
- Reduction in tooth mineral solubility



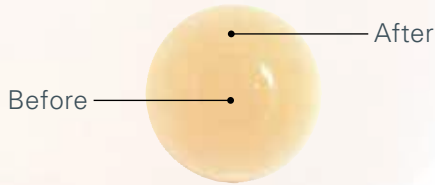
1. Gordan V.V., et al. A clinical evaluation of a self-etching primer and a Gioner restorative material: Results at 8 years. JAM Dent. Assoc. 2007;138:621-627

2. Gordan V.V., et al. A clinical evaluation of a Gioner restorative system: 13-year recall. Presented at IADR General Session; March 23, 2013; Seattle, Washington

& Beautifil® II

■ *Completely and accurately seals margins*

■ *Color stability before and after curing*

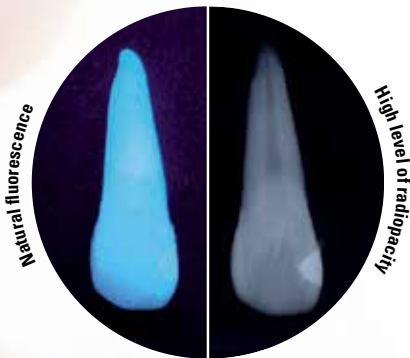


■ *Ideal light transmission*

■ *Natural fluorescence*

■ *Optical characteristics with a chameleon effect simulate the natural dentition*

■ *High level of radiopacity*



Photos courtesy of Frank J. Milnar, DDS, AAACD



Photos courtesy of Sushil Koirala, BDS, AAAD

Despite multiple advances in dental material science (most of the current composites on the market shrink about 2% to 5%), **volumetric shrinkage** and the resultant stress continue to challenge all clinicians. The unrelieved stress can weaken the bond between the tooth structure and the restoration, eventually producing a gap at the restoration margins. It can also lead to the formation of secondary caries and post-operative sensitivity, resulting in the debonding.

Indicated for all classes of restorations, I—V, Beautifil II LS (Low Shrink), has been formulated to minimize **polymerization shrinkage** and resultant **shrinkage stress**. With superior durability and aesthetics, combined with low **polymerization shrinkage** and **shrinkage stress**, Beautifil II LS, delivers predictable clinical efficacy and maximum performance characteristics. Credited for these outstanding results are a new proprietary monomer and high-density pre-polymerized fillers which also exhibit tooth-like optical properties and natural aesthetics.

■ *Low **volumetric shrinkage** (0.85%) and **shrinkage stress** (2.72 MPa)*

■ *Great strength and high wear resistance*

■ *Polishes in an instant*

■ *Tooth-like aesthetics with natural fluorescence and chameleon effect*

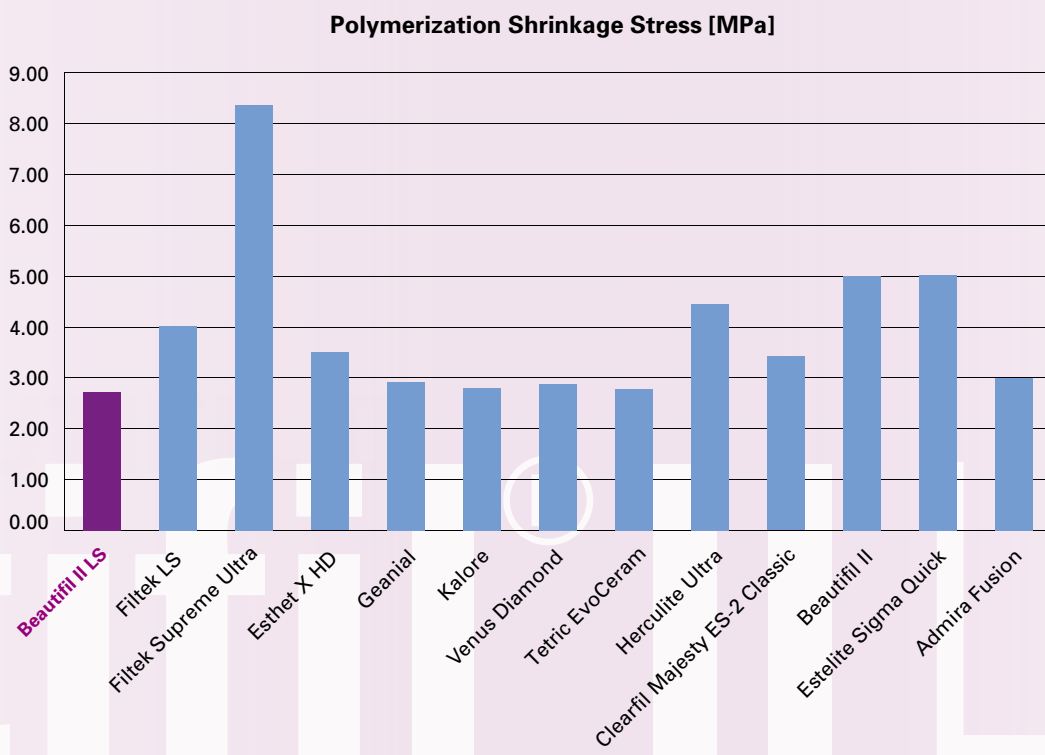
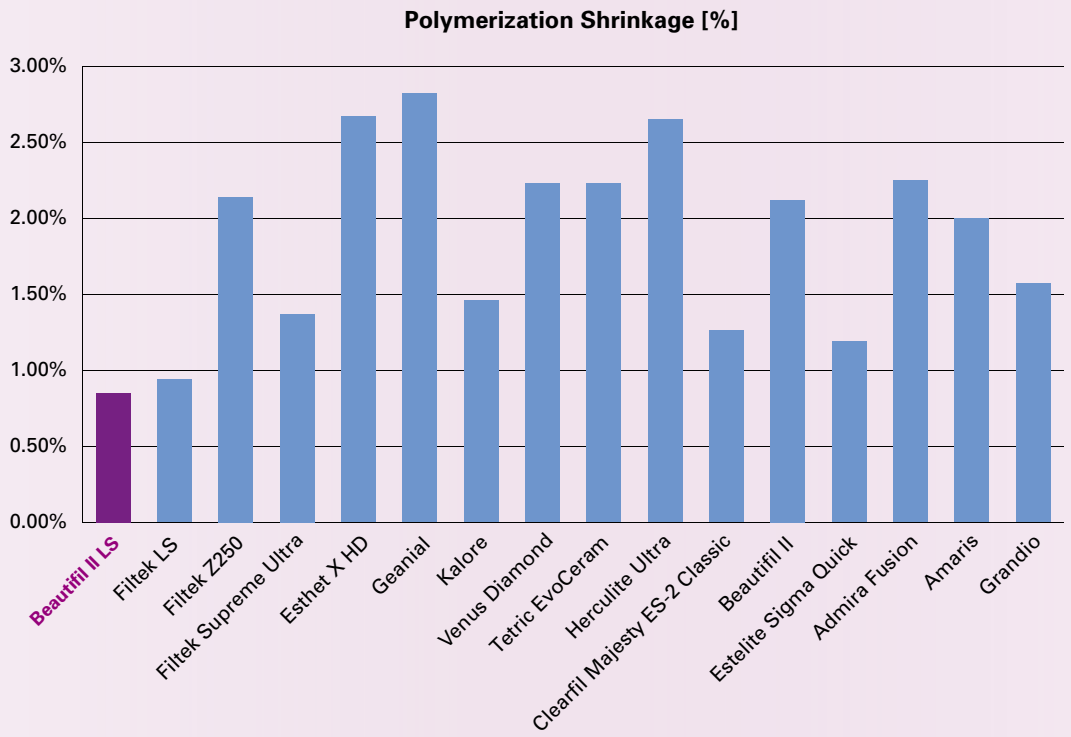
■ *Natural light transmission and diffusion*

■ *Sustainable fluoride release and recharge with bioactive Giomer Technology*



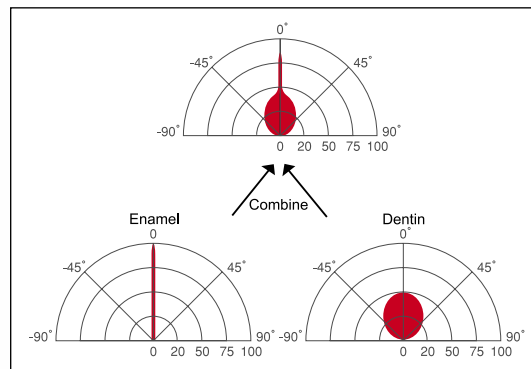
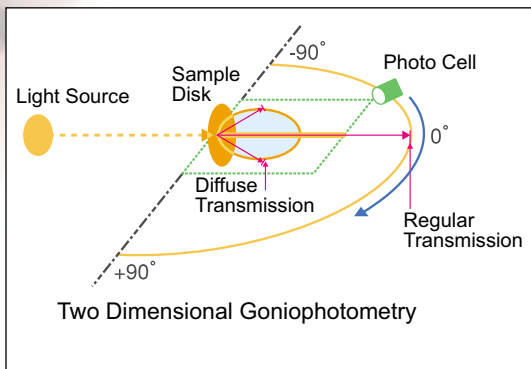
Photos courtesy of Frank J. Milnar, DDS, AAACD

Beautiful II LS incorporates a proprietary Giomer chemistry which facilitates release and recharge of fluoride, strontium and other beneficial ions providing the ability to inhibit plaque formation and establish a stable pH in the oral environment, decreasing the risk for secondary caries.



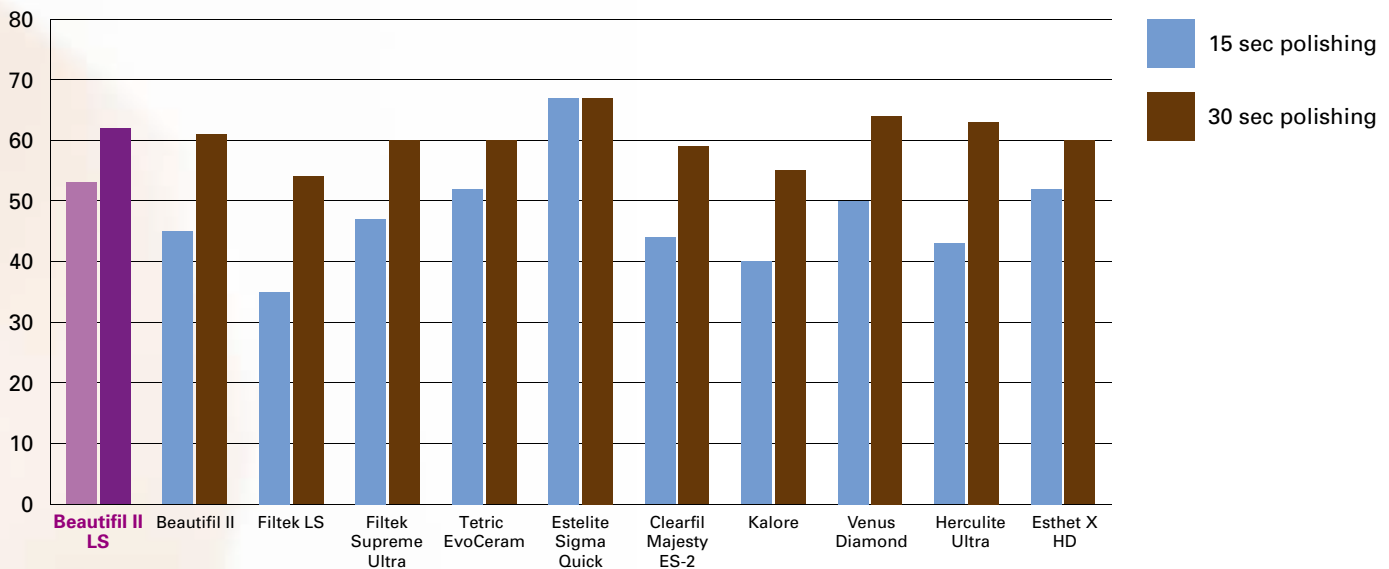
PHYSICAL PROPERTIES

	Beautiful II	Beautiful II LS
Compressive Strength	330 MPa	364 MPa
Flexural Strength	130 MPa	117 MPa
Vickers Hardness	62 Hv	46 Hv
Wear Resistance	0.52 wt%	1.42 wt%
Filler Load	83 wt%	83 wt%
Radiopacity	3.4 Al:mm	2.0 Al:mm (dentin 1Al:mm)
Fluoride Release & Recharge	Yes	Yes



BEAUTIFIL Light Transmission and Diffusion

Polishability & Luster [Gloss Units]



Beautiful® II & Beautiful® II LS

VISIT WWW.SHOFU.COM

SHOFU

OR CALL 800.827.4638



BEAUTIFIL II			
Syringe 4.5g		Tips 0.25g x 20 tips	
Shade	Item No.	Shade	Item No.
A1	1401	A1	1752
A2	1402	A2	1753
A3	1403	A3	1754
A3.5	1404	A3.5	1755
A4	1405	A4	1756
B1	1408	B1	1759
B2	1409	B2	1760
B3	1410	C2	1763
C2	1412	A20	1770
C3	1413	A30	1771
A20	1419	Incisal	1766
A30	1420	Bleach White	1767
Incisal	1415		
Bleach White	1416		

BEAUTIFIL II LS			
Syringe 4g		Tips 0.25g x 20 tips	
Shade	Item No.	Shade	Item No.
A1	Y2270	A1	Y2284
A2	Y2271	A2	Y2285
A3	Y2272	A3	Y2286
A3.5	Y2273	A3.5	Y2287
A4	Y2274	A4	Y2288
B1	Y2275	B1	Y2289
B2	Y2276	B2	Y2290
B3	Y2277	B3	Y2291
C2	Y2278	C2	Y2292
C3	Y2279	C3	Y2293
A20	Y2280	A20	Y2294
A30	Y2281	A30	Y2295
Incisal	Y2282	Incisal	Y2296
Bleach White	Y2283	Bleach White	Y2297

BEAUTIFIL II GINGIVA & ENAMEL SHADES

Gingiva Syringe 2g		Enamel Syringe 2g	
Shade	Item No.	Shade	Item No.
G-LP	Y2256	T	Y2250
G-DP	Y2257	HVT	Y2251
G-V	Y2258	LVT	Y2252
G-Br	Y2259	AM	Y2253
G-Or	Y2260		

Ideal with BeautiBond®

BeautiBond Unit Dose (Item No. 1782)

(50) 0.1mL unit doses, 50 microbrushes

BeautiBond Bottle (Item No. 1781)

6mL, 50 microbrushes



Beautiful Opaquers 2g

Beautiful Opaquer UO (Item No. 1363)

Beautiful Opaquer LO (Item No. 1364)



USA

Shofu Dental Corporation
1225 Stone Drive
San Marcos, CA 92078-4059, USA

JAPAN

Shofu Inc.
11 Kamitakamatsu-cho
Fukuine, Higashiyama-ku
Kyoto 605-0983, Japan

SINGAPORE

Shofu In. Singapore Branch
10 Science Park Road #03-12
The Alpha, Science Park II
Singapore 117684

U.K.

SHOFU UK Riverside
House,
River Lawn Road,
Tonbridge,
Kent, TN9 1EP, UK

CHINA

Shofu Dental Supplies
(Shanghai) Co. Ltd.
No.645 Jiye Road
Seshan Industry Park
Songjiang 201602,
Shanghai, China

GERMANY

EU Representative:
Shofu Dental GmbH
Am Brüll 17
40878 Ratingen, Germany